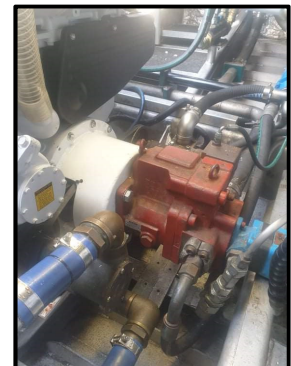




# POWER PROFILE



<b>Application:</b>	<b>Commercial - Mussel Farming Boat</b>
<b>Vessel Construction:</b>	<b>Aluminum</b>
<b>Vessel Name:</b>	<b>Platinum</b>
<b>Vessel Owner:</b>	<b>Sanford Limited</b>
<b>Length (LWL / LOA):</b>	<b>19.1</b>
<b>Weight:</b>	<b>44 Tonnes</b>
<b>Engine Model:</b>	<b>6HYM-WET</b>
<b>Engine Power Rating:</b>	<b>515kW (700mhp) @ 2,200RPM</b>
<b>Drive Configuration:</b>	<b>Fixed Pitch Propeller</b>
<b>Gear Ratio and Model:</b>	<b>Ratio 2.5:1 / ZF665A</b>
<b>Control Type:</b>	<b>Teleflex KE4T</b>
<b>Cruise Speed:</b>	<b>9.3 Knots</b>
<b>Top Speed:</b>	<b>11 Knots</b>
<b>Propeller Size:</b>	<b>34 x 33.5" Pitch x 4 Blade</b>
<b>Technician Name:</b>	<b>Sam Neal</b>
<b>Date of Operational Check:</b>	<b>15<sup>th</sup> December 2020</b>
<b>Sold by:</b>	<b>Seafarer Marine.</b>
<b>New Installation Completed by:</b>	<b>Aimex New Zealand</b>

## Comments:

Platinum is a Mussel farm work vessel that was repowered after the failure of the V12 MAN. The original transmission was reused and the hydraulics remounted on the front using a live drive bell housing. New stainless exhaust and existing K4 controls. The vessel performs extremely well and is saving fuel by the ton. At the time I write this it has had its 1000hr service and has a perfect performance record to date.

NOTE from customer.

Thank you for a great engine which is giving us great service.

Disclaimer: Power Equipment provides this Performance Report for general information only. This data is accurate only as to the exact date, time and specifications set out in this Report. YANMAR makes no warranties as to the performance or fuel consumption of any boat equipped with a Yanmar engine as numerous factors affect actual performance of an engine



Australia, NZ and South Pacific Distributor

Contact us for your nearest Dealer

Australia: 1800 069 469

[www.powerequipment.com.au](http://www.powerequipment.com.au)

New Zealand: +64 9 358 7478

[www.powerequipment.co.nz](http://www.powerequipment.co.nz)