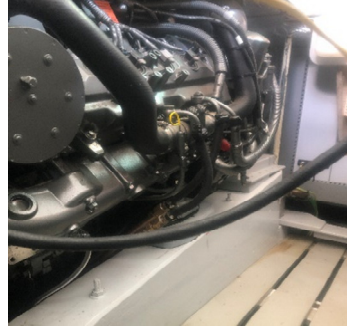




# POWER PROFILE



<b>Application:</b>	Pleasure Craft
<b>Vessel Construction:</b>	Timber
<b>Vessel Name:</b>	MV Septima
<b>Vessel Owner:</b>	Dave Peters
<b>Length (LWL / LOA):</b>	44' LOA
<b>Weight:</b>	-
<b>Engine Model:</b>	8LV370
<b>Engine Power Rating:</b>	272kW (370MHP) @ 3800rpm
<b>Drive Configuration:</b>	Shaft Drive x 2
<b>Gear Ratio and Model:</b>	ZF220 / 2.478:1
<b>Electronic Control Type:</b>	YANMAR VC10
<b>Cruise Speed:</b>	14 Knots
<b>Top Speed:</b>	20 Knots
<b>Propeller Size:</b>	-
<b>Technician Name:</b>	Ian Mills
<b>Date of Operational Check:</b>	21 <sup>st</sup> November 2019
<b>Sold by:</b>	Power Equipment NSW / Cottage Point Boat Shed
<b>Repower Installation Completed by:</b>	Cottage Point Boat Shed

## Comments:

Operational Check # NSW076 - Halvorsen - Cottage Point - 8LV370

Another successful repower carried out by Cottage Point Boat Shed on this beautiful Halvorsen Special 44, replacing the old Detroit 6V53 engines with YANMAR 8LV370 engines. The vessel performs flawless with its new engines with greatly reduced noise level in the cabin compared to the old Detroit. The owner wanted good fuel economy, latest electronics to be able to interface with various on board displays and yet to still give good performance, which the YANMAR 8LV370 delivers.

Disclaimer: Power Equipment provides this Performance Report for general information only. This data is accurate only as to the exact date, time and specifications set out in this Report. YANMAR makes no warranties as to the performance or fuel consumption of any boat equipped with a Yanmar engine as numerous factors affect actual performance of an engine.



Australia, NZ and South Pacific Distributor

Contact us for your nearest Dealer

Australia: 1800 069 469

[www.powerequipment.com.au](http://www.powerequipment.com.au)

New Zealand: +64 9 358 7478

[www.powerequipment.co.nz](http://www.powerequipment.co.nz)