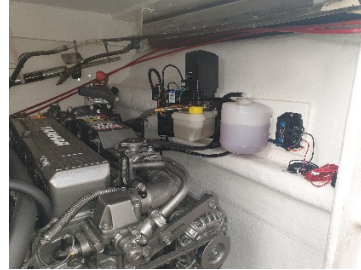




# POWER PROFILE



<b>Application:</b>	<b>Pleasure Craft</b>
<b>Vessel Construction:</b>	<b>Fiberglass</b>
<b>Vessel Name:</b>	<b>Out of the Blue</b>
<b>Vessel Owner:</b>	<b>-</b>
<b>Length (LWL / LOA):</b>	<b>14.4M (45ft) Power Cat</b>
<b>Weight:</b>	<b>11.5 Tons</b>
<b>Engine Model:</b>	<b>2 x 4LHA-STZP Bravo 2X</b>
<b>Engine Power Rating:</b>	<b>177kW (240mhp) at 3300 RPM</b>
<b>Drive Configuration:</b>	<b>Bravo 2X</b>
<b>Gear Ratio and Model:</b>	<b>2.0:1</b>
<b>Control Type:</b>	<b>Twin lever Mechanical control (single station)</b>
<b>Cruise Speed:</b>	<b>15 knots</b>
<b>Top Speed:</b>	<b>21 knots</b>
<b>Propeller Size:</b>	<b>17.75 x 21 RH B2 Aluminum Propellers</b>
<b>Technician Name:</b>	<b>Kieren Wilson</b>
<b>Date of Operational Check:</b>	<b>September 2019</b>
<b>Sold by:</b>	<b>Ray Harris</b>
<b>Repower Installation Completed by:</b>	<b>Gladstone Machinery Maintenance</b>

## Comments:

Vessel was originally built in the late 80's and was powered by a pair of Volvo AQAD 40A stern-drives with Duo Prop's which was a 3.6L engine rated at 165hp at 3800rpm. We have no history of the vessels original performance.

New installation - Exhaust was through leg.

Disclaimer: Power Equipment provides this Performance Report for general information only. This data is accurate only as to the exact date, time and specifications set out in this Report. YANMAR makes no warranties as to the performance or fuel consumption of any boat equipped with a Yanmar engine as numerous factors affect actual performance of an engine.



Australia, NZ and South Pacific Distributor

Contact us for your nearest Dealer

Australia: 1800 069 469

[www.powerequipment.com.au](http://www.powerequipment.com.au)

New Zealand: +64 9 358 7478

[www.powerequipment.co.nz](http://www.powerequipment.co.nz)