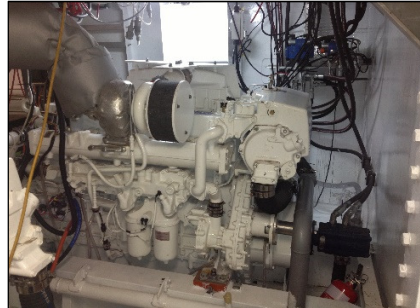




POWER PROFILE



Application:	Commercial – Landing Craft
Vessel Construction:	Steel
Vessel Name:	Jubilee
Vessel Owner:	Riverside Marine
Length (LWL / LOA):	34.9M
Weight:	380T Fully Loaded
Engine Model:	Yanmar 6HA2M-WHT x 2
Engine Power Rating:	204kW (278mhp) @ 1880RPM
Bow Thruster	Yanmar 6HA2M-DTE 298kW (405mhp) @ 1950 RPM – Hydraulic Power Pack
Drive Configuration:	Shaft Propeller x 2 with “Schottel” Brand Bow Thruster
Gear Ratio and Model:	4.59 : 1 / Yanmar YX120L
Control Type:	-
Cruise Speed:	-
Top Speed:	7.2 knots
Propeller Size:	40 x 50 x 5 nozzle
Technician Name:	Barrie Hamer
Date of Operational Check:	20 th September 2013
Sold by:	Power Equipment QLD
Repower & Installation Completed by:	Riverside Marine

Comments:

Operational check # QLD 637 refers.
Main engine & bow thruster drive converted to keel cooling by the client.

Disclaimer: Power Equipment provides this Performance Report for general information only. This data is accurate only as to the exact date, time and specifications set out in this Report. YANMAR makes no warranties as to the performance or fuel consumption of any boat equipped with a Yanmar engine as numerous factors affect actual performance of an engine.



Contact us for your nearest Dealer
Australia: 1800 069 469
www.powerequipment.com.au
New Zealand: +64 9 358 7478
www.powerequipment.co.nz