

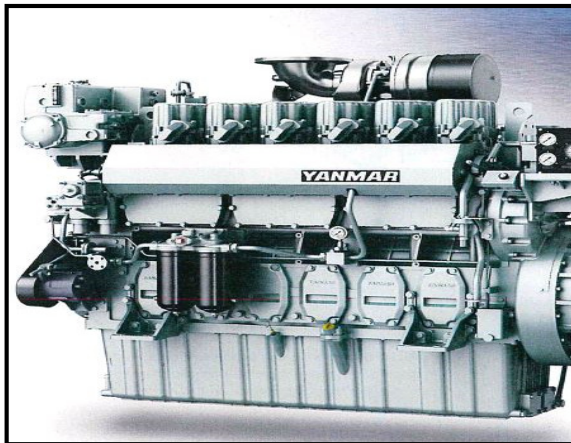
# YANMAR

## POWER PROFILE

<b>Application:</b>	<b>Commercial - Anchor Handling Tug</b>
<b>Vessel Construction:</b>	<b>Steel</b>
<b>Vessel Name:</b>	<b>Pacific Titan</b>
<b>Vessel Owner:</b>	<b>East Coast Maritime (ECM) Group QLD</b>
<b>Length (LWL / LOA / Beam)</b>	<b>25.8 metres / Beam 9.1 metres</b>
<b>Weight / Draft</b>	<b>Gross Tonnage: 212 / Draft: 2.6 metres</b>
<b>Engine Model:</b>	<b>2 x Yanmar 6EY17W</b>
<b>Engine Power Rating: (Each)</b>	<b>837kW (1138 mhp) @ 1450RPM</b>
<b>Drive configuration:</b>	<b>Island Mount Transmissions Driving Twin Propeller Shafts</b>
<b>Gear Ratio and Model:</b>	<b>4.96:1 Yanmar YXH500L x 2</b>
<b>Classification Type:</b>	<b>Lloyds Register</b>
<b>Cruise Speed/Fuel Consumption</b>	<b>11 knots</b>
<b>Top Speed:</b>	<b>12.7 knots</b>
<b>Propeller Size:</b>	<b>2 x Veem Skewplan</b>
<b>Bollard Pull:</b>	<b>Certified Static Bollard Pull of 31.6 tonnes @ 100% MCR</b>
<b>Commissioning Year:</b>	<b>2017</b>
<b>Naval Architects / Designer:</b>	<b>Sea Transport Solutions, Australia</b>
<b>New Installation Completed By:</b>	<b>Hung Seng Shipbuilding, Malaysia</b>

# YANMAR

## POWER PROFILE



### **Comments:**

#### **Auxiliary Engines are**

- 2 x Yanmar 6CHL-TN (60kva) Marine Generators
- 1 x Yanmar 6HA2M-WHT(M) (257kW) Diesel Hydraulic Power Unit (DHPV)

***Pacific Titan is a purpose built 26 metre shallow draught utility tug for dredge support, barge handling, anchor handling & towage. Customized for sea bed levelling & ploughing operations.***

***The East Coast Maritime fleet based at Gladstone (QLD) is a very loyal & repeat user of Yanmar commercial purpose built marine engines.***

Disclaimer: Power Equipment provides this Performance Report for general information only. This data is accurate only as to the exact date, time and specifications set out in this Report. YANMAR makes no warranties as to the performance or fuel consumption of any boat equipped with a Yanmar engine as numerous factors affect actual performance of an engine.