

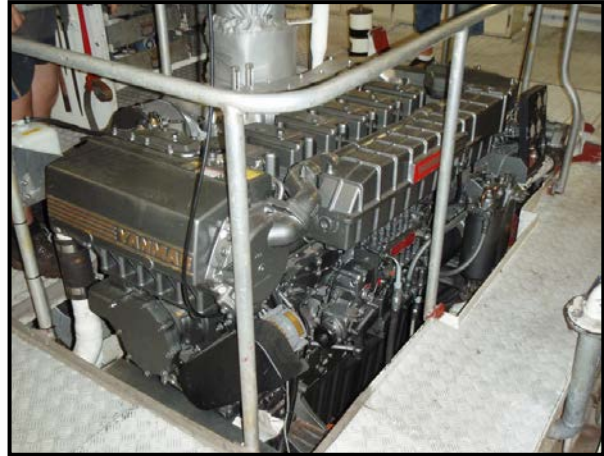
YANMAR

POWER PROFILE

Application:	Commercial - Pearl Shell Carrier
Vessel Construction:	Steel Monohull
Vessel Name:	Montoro
Vessel Owner:	Paspaley Pearls
Length (LWL / LOA):	36.38m/Beam 9/15m/Draft Loaded
Weight:	500 Tonne Gross
Engine:	Yanmar 6AY-ETE x 2
Engine Power Rating:	555kW (755mhp) @ 1840 RPM
Drive configuration:	Yanmar YXH 240L
Gear Ratio and Model:	5.9 : 1
Electronic Control Type:	-
Cruise Speed/Fuel Consumption	11.6 knots @ 1600 RPM
Top Speed:	13.4 knots @ 1900 RPM
Propeller Size:	-
Technician Name:	-
Date of Operational check:	13th March 2008
Sold by:	Power Equipment WA
Repower Installation Completed By:	Pearl Marine Engineering - Darwin

YANMAR

POWER PROFILE



Comments:

*Operational Check # WA070 refers.
Repower Caterpillar 3408.
Dry Exhaust / Rigid Mount / C Panel installed in engine room.
Port Engine driving steering pump.
STB engine driving bilge pump / electric clutch.*

Disclaimer: Power Equipment provides this Performance Report for general information only. This data is accurate only as to the exact date, time and specifications set out in this Report. YANMAR makes no warranties as to the performance or fuel consumption of any boat equipped with a Yanmar engine as numerous factors affect actual performance of an engine.