

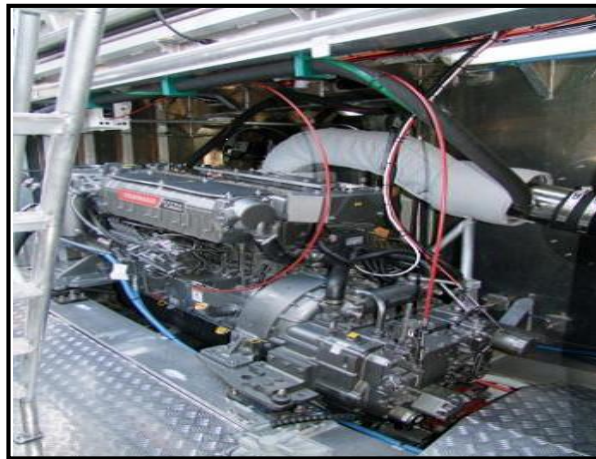
# YANMAR

## POWER PROFILE

<b>Application:</b>	<b>Commercial – Crab Fishing</b>
<b>Vessel Construction:</b>	<b>Plate Aluminium</b>
<b>Vessel Name:</b>	<b>FV Silver Spectre</b>
<b>Vessel Owner:</b>	<b>DM &amp; KL Holder Pty Ltd</b>
<b>Length (LWL/LOA):</b>	<b>LWL=22 / LOA=23.95</b>
<b>Weight:</b>	<b>47,500kg LS/ 77,000kg HS</b>
<b>Engine:</b>	<b>Yanmar 6HY-ETE (M) x 2</b>
<b>Engine Power Rating:</b>	<b>441kW (600mhp) @ 2100 RPM</b>
<b>Drive configuration:</b>	<b>Shaft Drive with Fitted Pitch Propellers x 2</b>
<b>Gear Ratio and Model:</b>	<b>2.46 : 1 / Yanmar YXH160-5 with BX Type Troll</b>
<b>Cruise Speed /Fuel Consumption</b>	<b>14 knots / 48 l/hr (total) based on 14hrs</b>
<b>Top Speed:</b>	<b>17.5 knots</b>
<b>Propeller Size:</b>	<b>39.5" x 30.5" x 4 Blade Mikado</b>
<b>Technician Name:</b>	<b>Steve Parsons</b>
<b>Date of Operational check:</b>	<b>10th August 2010</b>
<b>Sold by:</b>	<b>Power Equipment VIC</b>
<b>New Installation Completed By:</b>	<b>Oceantech Design / Calibre Marine</b>

# YANMAR

## POWER PROFILE



### **Comments:**

*FV "Silver Spectre" is the benchmark vessel for the Blue Swimmer Crab Fishery in South Australia. This modern, well designed vessel returns amazing fuel consumption figures of approx 48 > 52 Lts/hr accounting for the two main engines, the MASE IS11.5T, the 100kVA Gen-Set and the diesel fired crab cooker. At the end of April 2012 the main engines have clocked up approx. 4200 hrs of trouble free service.*

*The MASE IS11.5T has done approx. 3200 hrs of trouble free service.*

Disclaimer: Power Equipment provides this Performance Report for general information only. This data is accurate only as to the exact date, time and specifications set out in this Report. YANMAR makes no warranties as to the performance or fuel consumption of any boat equipped with a Yanmar engine as numerous factors affect actual performance of an engine.