

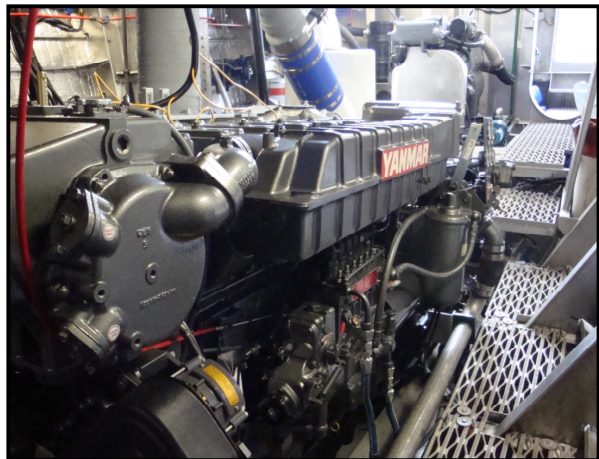
YANMAR

POWER PROFILE

Application:	Commercial – Expedition Charter
Vessel Construction:	Aluminium Catamaran
Vessel Name:	MV Great Escape
Vessel Owner:	The Great Escape Charter Company
Length (LWL / LOA):	26 metre
Weight:	109,000 kgs
Engine:	Yanmar 6AY-WGT (L) x 2
Engine Power Rating:	670kW (911mhp) @ 1938 RPM
Drive configuration:	Shaft Drive with Fixed Pitch Propeller x 2
Gear Ratio and Model:	2.45:1 / Twin Disc MGX 6598SC
Electronic Control Type:	Twin Disc EC300
Cruise Speed /Fuel Consumption	12 knots @ 1300 rpm
Top Speed:	15 knots
Propeller Size:	Mikado 40” x 40 1/8” x 5 Blade
Technician Name:	Peter Fennell of Fleet Hydraulics
Date of Operational check:	27th February 2015
Sold by:	Fleet Hydraulics – Geraldton WA
Repower & Installation Completed By:	Jim Fab - Geraldton

YANMAR

POWER PROFILE



Comments:

*Operational Check # WA25 refers
Isoflex flexible engine mount option.
Caterpillar 3412E engine removed.*

Disclaimer: Power Equipment provides this Performance Report for general information only. This data is accurate only as to the exact date, time and specifications set out in this Report. YANMAR makes no warranties as to the performance or fuel consumption of any boat equipped with a Yanmar engine as numerous factors affect actual performance of an engine.