

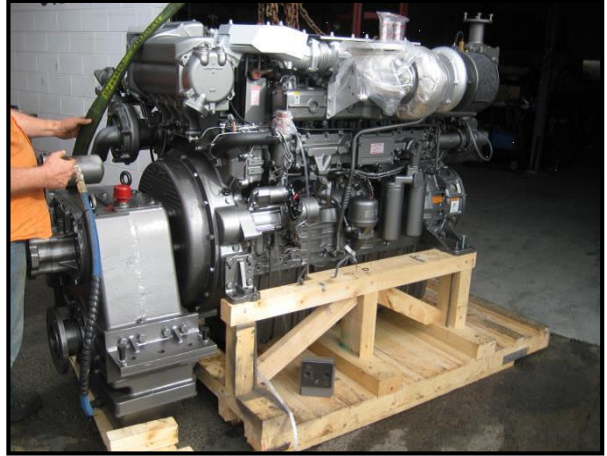
YANMAR

POWER PROFILE

Application:	Commercial – Prawn Trawler
Vessel Construction:	Steel
Vessel Name:	Emserve
Vessel Owner:	Madang Contractors
Length (LWL / LOA):	24m
Weight:	124 Tonne
Engine:	Yanmar 6AY-STE x 1
Engine Power Rating:	485kW (659mhp) @ 1900 RPM
Drive configuration:	Shaft with Controllable Pitch Propeller & Nozzle
Gear Ratio and Model:	6.00 : 1 / TD MG5170
Cruise Speed /Fuel Consumption	N/A
Top Speed:	10 knots
Propeller Size:	Variable
Technician Name:	John Van Boven/Jim Kibblewhite
Date of Operational Check	4th August 2010
Sold by:	Power Equipment QLD
Repower & Installation Completed By:	Tropic Engineering Cairns

YANMAR

POWER PROFILE



Comments:

*Operational Check # QLD 526 refers.
Fitted with Keel Cooling Option - Repowered Caterpillar
Engine Front Direct Mount P.T.O.*

Disclaimer: Power Equipment provides this Performance Report for general information only. This data is accurate only as to the exact date, time and specifications set out in this Report. YANMAR makes no warranties as to the performance or fuel consumption of any boat equipped with a Yanmar engine as numerous factors affect actual performance of an engine.