

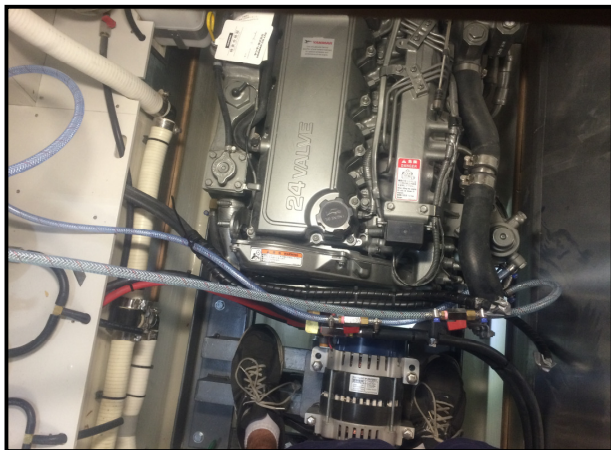
# YANMAR

## POWER PROFILE

<b>Application:</b>	<b>Pleasure Craft</b>
<b>Vessel Construction:</b>	<b>FRP</b>
<b>Vessel Name:</b>	<b>Paradigm</b>
<b>Vessel Owner:</b>	<b>-</b>
<b>Length (LWL / LOA):</b>	<b>49FT - LOA</b>
<b>Weight:</b>	<b>19 T</b>
<b>Engine:</b>	<b>Yanmar 6LPA-STP2 x 2</b>
<b>Engine Power Rating:</b>	<b>232kW (315mhp ) @ 3800rpm</b>
<b>Drive configuration:</b>	<b>Shaft Drive x 2 with Fixed Pitch Propeller</b>
<b>Gear Ratio and Model:</b>	<b>2.43:1 – Yanmar KMH50A</b>
<b>Electronic Control Type:</b>	<b>Morse KE4</b>
<b>Top Speed:</b>	<b>20.9 Knots</b>
<b>Propeller Size:</b>	<b>Veem – 22.5 x 20.8 – 4 Blade</b>
<b>Technician Name:</b>	<b>Brad Williams</b>
<b>Date of Operational check:</b>	<b>18<sup>th</sup> July 2016</b>
<b>Sold by:</b>	<b>Power Equipment Coomera</b>
<b>New Installation Completed By:</b>	<b>Pacific Power Cats - Brisbane</b>

# YANMAR

## POWER PROFILE



**Comments:**

*Operational Check # QLD 68 Refers  
New vessel build by Pacific Power Cats.*

Disclaimer: Power Equipment provides this Performance Report for general information only. This data is accurate only as to the exact date, time and specifications set out in this Report. YANMAR makes no warranties as to the performance or fuel consumption of any boat equipped with a Yanmar engine as numerous factors affect actual performance of an engine.