

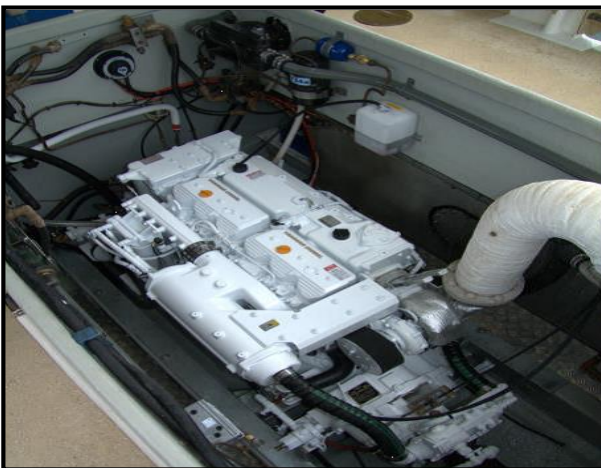
YANMAR

POWER PROFILE

Application:	Commercial Fishing
Vessel Construction:	GRP - Steber 41
Vessel Name:	Kunara
Vessel Owner:	Puglisi Fishing Pty Ltd
Length (LWL / LOA):	41' / 38'
Weight:	12,000kg
Engine:	Yanmar 6CXBM-GT (L)
Engine Power Rating:	464mhp (341kW) @ 2700 RPM
Drive configuration:	Fixed Propeller x 1
Gear Ratio and Model:	2.88 : 1 / Twin Disc MG5075
Cruise Speed /Fuel Consumption	12>16 knots
Top Speed:	20.5 knots
Propeller Size:	Veem 33" x 31.5" x 4 blade
Technician Name:	Steve Parsons / Craigh Hurst
Date of Operational check:	14th June 2013
Sold by:	Craigh Hurst Engineering
Repower & Installation Completed By:	Craigh Hurst Engineering

YANMAR

POWER PROFILE



Craigh Hurst
ENGINEERING

BSHD Pty Ltd as trustee for the Hurst Family Trust
trading as Craigh Hurst Engineering

Comments:

Operational Check # SNSW 13 refers.

Repowered IVECO 6 cylinder

Mase IS7 generator also fitted.

Custom front PTO Drive for Hydraulic Pump, Bilge Pump & air conditioning compressor engineered and installed by Craigh Hurst Engineering.

Disclaimer: Power Equipment provides this Performance Report for general information only. This data is accurate only as to the exact date, time and specifications set out in this Report. YANMAR makes no warranties as to the performance or fuel consumption of any boat equipped with a Yanmar engine as numerous factors affect actual performance of an engine.