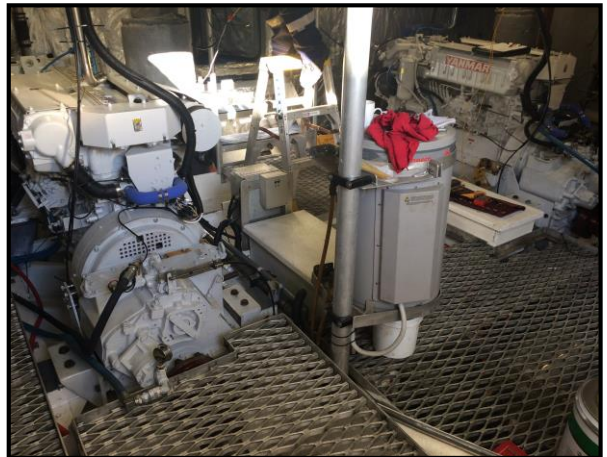


# YANMAR

## POWER PROFILE



# YANMAR

## POWER PROFILE

<b>Application:</b>	<b>Expedition Cruises</b>
<b>Vessel Construction:</b>	<b>GRP – Fiberglass</b>
<b>Vessel Name:</b>	<b>Kimberley Quest</b>
<b>Vessel Owner:</b>	<b>Kimberley Quest Cruises</b>
<b>Length (LWL / LOA):</b>	<b>24M x 8M</b>
<b>Weight:</b>	<b>120,000kgs</b>
<b>Engine:</b>	<b>6HY-WET(H) x 2</b>
<b>Engine Power Rating:</b>	<b>500mhp( 368kW) @1950rpm</b>
<b>Drive configuration:</b>	<b>Fixed Propeller x 2</b>
<b>Gear Ratio and Model:</b>	<b>Twin Disc MG5114DC 3.43:1</b>
<b>Electronic Control Type:</b>	<b>ZF Micro Commander</b>
<b>Top Speed:</b>	<b>11.5knots</b>
<b>Propeller Size:</b>	<b>TBA</b>
<b>Technician Name:</b>	<b>Nick Marsden</b>
<b>Date of Operational check:</b>	<b>18/12/15</b>
<b>Sold by:</b>	<b>PE WA</b>
<b>Repower Installation Completed By:</b>	<b>WestJet Propulsion</b>

**Comments:**

- **Operational check # WA 32 refers**
- **Vessel was originally powered by Caterpillar 3406E 480hp@1800rpm**
- **Owners initial feedback following installation: improved speed, less noise and less fuel consumption**

Disclaimer: Power Equipment provides this Performance Report for general information only. This data is accurate only as to the exact date, time and specifications set out in this Report. YANMAR makes no warranties as to the performance or fuel consumption of any boat equipped with a Yanmar engine as numerous factors affect actual performance of an engine.