

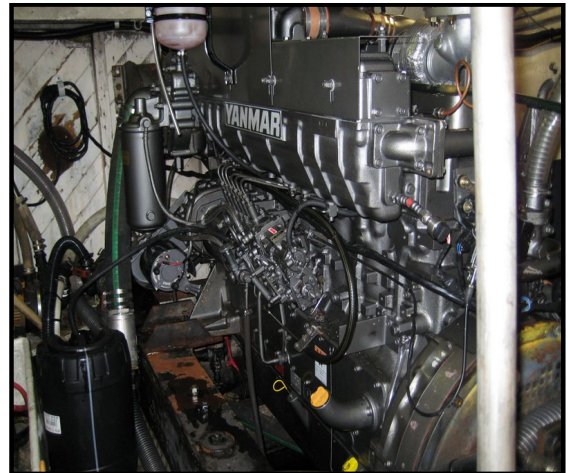
# YANMAR

## POWER PROFILE

<b>Application:</b>	Commercial Trawler
<b>Vessel Construction:</b>	-
<b>Vessel Name:</b>	C-Girl
<b>Vessel Owner:</b>	Ian Harris
<b>Length (LWL / LOA):</b>	55ft
<b>Weight:</b>	50,000kgs
<b>Engine Model:</b>	Yanmar 6HA2M-HTE.
<b>Engine Power Rating:</b>	257kW (350mhp) @ 1950 RPM
<b>Drive configuration:</b>	Shaft Drive Fixed Pitch Propeller x 1
<b>Gear Ratio and Model:</b>	4.00:1 / MG5111 / Twin Disc
<b>Electronic Control Type:</b>	-
<b>Cruise Speed/Fuel Consumption</b>	-
<b>Top Speed:</b>	9 knots
<b>Propeller Size:</b>	48 x 39 x 4 blade Veem
<b>Technician Name:</b>	Nick Marsden
<b>Date of Operational check:</b>	23 <sup>rd</sup> January 2008
<b>Sold by:</b>	Power Equipment QLD
<b>Repower &amp; Installation Completed By:</b>	Owner

# YANMAR

## POWER PROFILE



### **Comments:**

*Operational Check # QLD395 refers.*

Disclaimer: Power Equipment provides this Performance Report for general information only. This data is accurate only as to the exact date, time and specifications set out in this Report. YANMAR makes no warranties as to the performance or fuel consumption of any boat equipped with a Yanmar engine as numerous factors affect actual performance of an engine.