

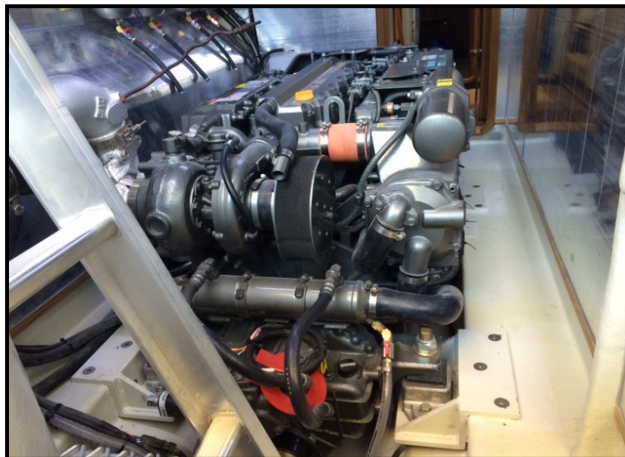
YANMAR

POWER PROFILE

Application:	Pleasure Boat
Vessel Construction:	Fiberglass
Vessel Name:	REHAB
Vessel Owner:	-----
Length (LWL / LOA):	17.4 MTR
Weight:	26 T
Engine:	2 x Yanmar 6LY3-STP
Engine Power Rating:	440 MHP @ 3300 RPM
Drive configuration:	Shaft Drive
Gear Ratio and Model:	KMH61A - 2.5:1
Electronic Control Type:	Yanmar
Top Speed:	26.5 Knots
Propeller Size:	26 x 26 - 4 blade
Technician Name:	Barrie Hamer
Date of Operational check:	23rd June 2014
Sold by:	Ray Harris Power Equipment Coomera
New Installation Completed By:	Pacific Power Cats

YANMAR

POWER PROFILE



Comments:

Operational Check # QLD 11 refers.

This new vessel was manufactured by Pacific Power Cats.

Yanmar Powered Mase Mariner 1600 Marine Generator also installed.

Disclaimer: Power Equipment provides this Performance Report for general information only. This data is accurate only as to the exact date, time and specifications set out in this Report. YANMAR makes no warranties as to the performance or fuel consumption of any boat equipped with a Yanmar engine as numerous factors affect actual performance of an engine.