

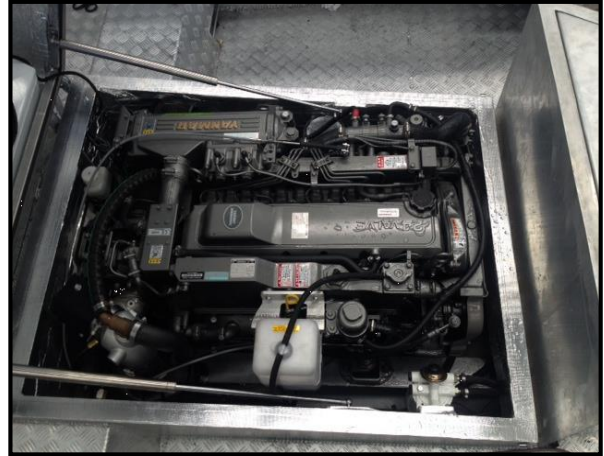
YANMAR

POWER PROFILE

Application:	Recreational Fishing
Vessel Construction:	Plate Aluminium
Vessel Name:	
Vessel Owner:	
Length (LWL/LOA):	8.5M
Weight:	3,520kg
Engine:	Yanmar 6LPA-STP2
Engine Power Rating:	
Drive configuration:	ZT370
Gear Ratio and Model:	1.78 : 1
Cruise Speed /Fuel Consumption	29 knots
Top Speed:	36 knots
Propeller Size:	24P
Technician Name:	Barrie Hammer
Date of Operational check:	31/10/2013
Sold by:	Power Equipment QLD
Repower & Installation Completed By:	Origin Boats

YANMAR

POWER PROFILE



Comments:

Disclaimer: Power Equipment provides this Performance Report for general information only. This data is accurate only as to the exact date, time and specifications set out in this Report. YANMAR makes no warranties as to the performance or fuel consumption of any boat equipped with a Yanmar engine as numerous factors affect actual performance of an engine.