

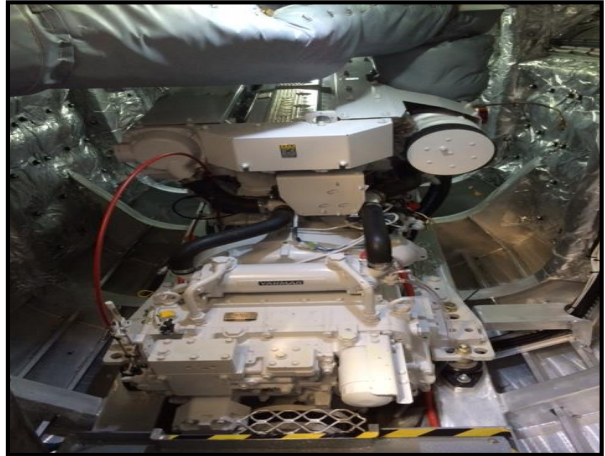
YANMAR

POWER PROFILE

Application:	Passenger Ferry
Vessel Construction:	Aluminium / Incat Crowther Design
Vessel Name:	D7
Vessel Owner:	Explore Group NZ
Length (LWL / LOA):	18 MTR
Weight:	42 T
Engine:	Yanmar 6HYM-WET(L) x 2
Engine Power Rating:	650mhp (478kW) @ 2150 RPM
Drive configuration:	Shaft x 2
Gear Ratio and Model:	Kanzaki YXH 160 1.97:1
Electronic Control Type:	ZF Micro Command
Top Speed:	26 Knots
Propeller Size:	760mm x 855mm 5 Blade
Technician Name:	Barrie Hamer
Date of Operational check:	18 November 2015
Sold by:	Ray Harris Power Equipment Coomera
New Installation Completed By:	Aluminium Marine

YANMAR

POWER PROFILE



Comments:

Operational Check # QLD 44 refers.

This vessel is the second one built by Aluminium Marine for the Explorer Group NZ.

www.explorergroup.co.nz

Disclaimer: Power Equipment provides this Performance Report for general information only. This data is accurate only as to the exact date, time and specifications set out in this Report. YANMAR makes no warranties as to the performance or fuel consumption of any boat equipped with a Yanmar engine as numerous factors affect actual performance of an engine.