

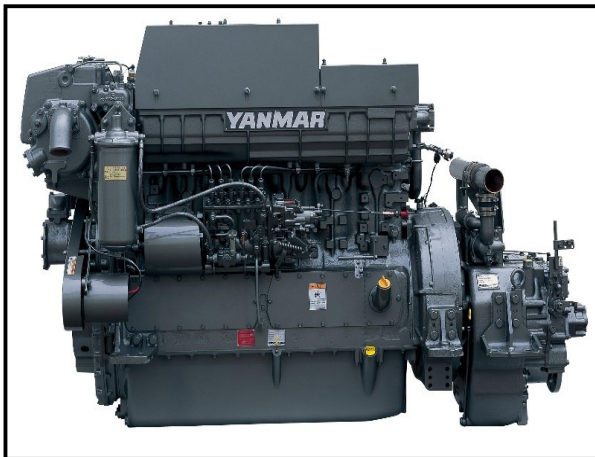
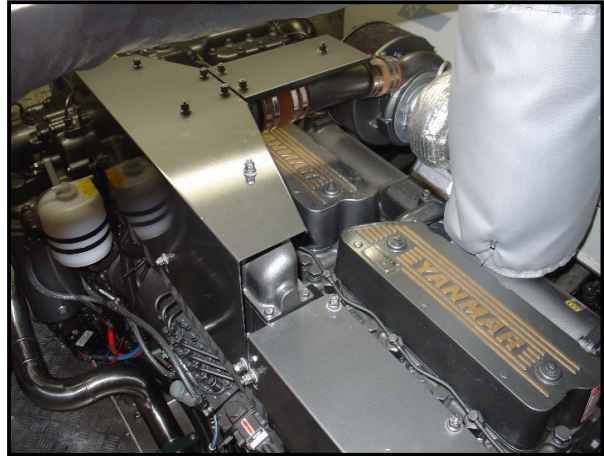
YANMAR

POWER PROFILE

Application:	Cray Boat
Vessel Construction:	Timber
Vessel Name:	William Norling
Vessel Owner:	Danny Fox
Length (LWL / LOA):	55 feet / 60 feet
Weight:	41,000 kgs
Engine:	YANMAR 6HA2M-HTE (H)
Engine Power Rating:	204kW (278mhp) @ 1880 RPM
Drive configuration:	Shaft
Gear Ratio and Model:	3.33:1 / Twin Disc MG509-1SC
Top Speed:	10.9 knots
Propeller Size:	38" x 36.75" x 4 Blade
Technician Name:	Steve Parsons
Date of Operational check:	14th July 2009
Sold by:	Power Equipment
Repower Installation Completed By:	Owner / Unitech Marine Sales, Tasmania

YANMAR

POWER PROFILE



Comments:

Operational Check # TAS 07 refers

Originally built by Charlie Norling, the William Norling has a long history in the Tasmanian fishing industry.

Now owned and operated by Danny Fox, Danny re-powered back in June/July 2009 with the Yanmar 6HA2M-HTE(H) and as of the 08-02-2015 clocked up 9869 hours.

Originally powered by a DDC 6-71, Danny notes that apart from the fuel savings which he says are approx. 30%, the Yanmar is significantly quieter, has a lot more power with great acceleration but best of all there is no oil leaks.

Disclaimer: Power Equipment provides this Performance Report for general information only. This data is accurate only as to the exact date, time and specifications set out in this Report. YANMAR makes no warranties as to the performance or fuel consumption of any boat equipped with a Yanmar engine as numerous factors affect actual performance of an engine.