

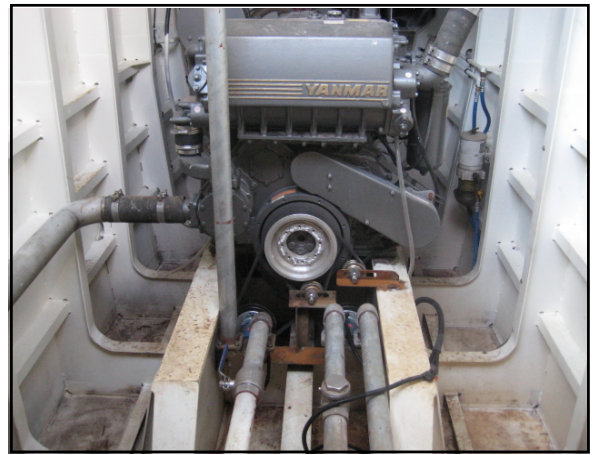
# YANMAR

## POWER PROFILE

<b>Application:</b>	<b>Commercial - Landing Barge</b>
<b>Vessel Construction:</b>	<b>Steel</b>
<b>Vessel Name:</b>	<b>Alpha Bree</b>
<b>Vessel Owner:</b>	<b>Total Barge Services - Mackay</b>
<b>Length (LWL / LOA):</b>	<b>35M</b>
<b>Weight:</b>	<b>130T &amp; 250T</b>
<b>Engine:</b>	<b>Yanmar 6HA2M-DTE x 2</b>
<b>Engine Power Rating:</b>	<b>405mhp (298kW) @ 1950 RPM</b>
<b>Drive configuration:</b>	<b>Shaft /Nozzle</b>
<b>Gear Ratio and Model:</b>	<b>2.95 : 1 / Twin Disc MG 5095SC</b>
<b>Cruise Speed /Fuel Consumption</b>	<b>-</b>
<b>Top Speed:</b>	<b>8.8 knots</b>
<b>Propeller Size:</b>	<b>4 blade in 41" Nozzle</b>
<b>Technician Name:</b>	<b>Nick Marsden</b>
<b>Date of Operational check:</b>	<b>09/10/2009</b>
<b>Sold by:</b>	<b>Power Equipment Qld</b>
<b>New Installation Completed By:</b>	<b>Owner/Builder</b>

# YANMAR

## POWER PROFILE



**Comments:**

*Operational Check # QLD 480 refers  
Engine Solid Mounted*

Disclaimer: Power Equipment provides this Performance Report for general information only. This data is accurate only as to the exact date, time and specifications set out in this Report. YANMAR makes no warranties as to the performance or fuel consumption of any boat equipped with a Yanmar engine as numerous factors affect actual performance of an engine.