

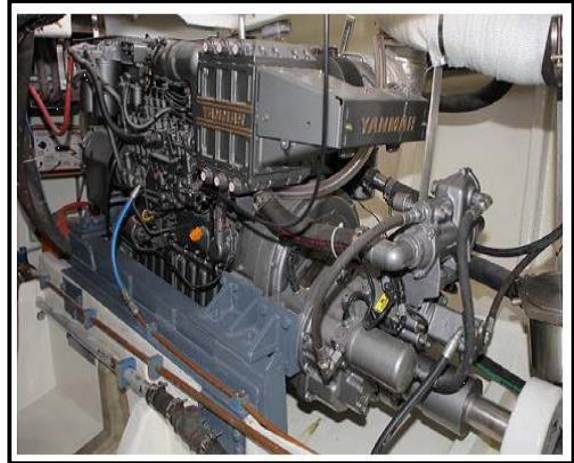
YANMAR

POWER PROFILE

Application:	Commercial - Training Vessel
Vessel Construction:	Fibreglass/Mono/Semi Displacement
Vessel Name:	Delphinus
Vessel Owner:	Marine Training Services
Length (LWL / LOA):	56' – 17M
Weight:	24,000kg
Engine:	Yanmar 6CX-GTYE x 2
Engine Power Rating:	400mhp (294kW) @ 2700 RPM
Drive configuration:	Twin Disc MGX-5065-SC
Gear Ratio and Model:	2.43 : 1
Cruise Speed /Fuel Consumption	14.1 knots @2200rpm / 30-33 l/hr
Top Speed:	21.6 knots
Propeller Size:	30" x 30" x 3 blade
Technician Name:	Steve Parsons/Ted Harrold
Date of Operational check:	07/09/2009
Sold by:	Drysdale Trawler Services
Repower & Installation Completed By:	Drysdale Trawler Svs / Owner

YANMAR

POWER PROFILE



Electronic Controls

Comments:

Repowered 8V92N. Client very impressed with Fuel consumption/reduced noise and excellent control offered by the twin disc "Quick Shaft" function. Refer to Yanmar Media Release for further information

Disclaimer: Power Equipment provides this Performance Report for general information only. This data is accurate only as to the exact date, time and specifications set out in this Report. YANMAR makes no warranties as to the performance or fuel consumption of any boat equipped with a Yanmar engine as numerous factors affect actual performance of an engine.