

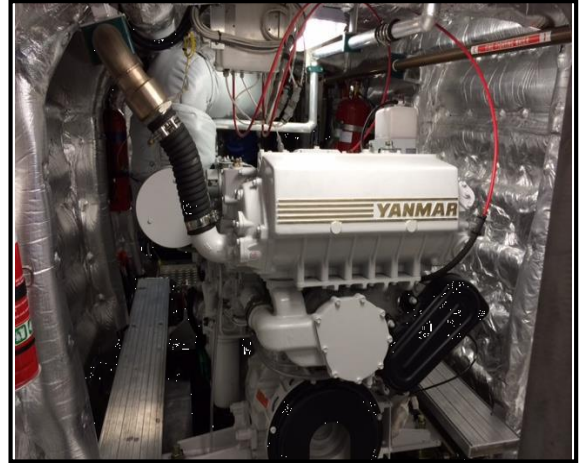
YANMAR

POWER PROFILE

Application:	Passenger Ferry
Vessel Construction:	Aluminium
Vessel Name:	Cougar 11 Fiji
Vessel Owner:	South Sea Cruises
Length (LWL / LOA):	24m
Weight:	
Engine:	Yanmar 6AYM-WGT
Engine Power Rating:	829mhp@1900
Drive configuration:	Kanzaki YXH 240
Gear Ratio and Model:	2.56:1
Cruise Speed /Fuel Consumption	22 knots
Top Speed:	25 knots
Propeller Size:	1025 x 1300 x 5 blade
Technician Name:	Barrie Hammer
Operational Check Date:	01/09/2014
Sold by:	PE QLD
Repower & Installation Completed By:	Aluminium Boats Australia

YANMAR

POWER PROFILE



Comments:

Owned and operated by South Sea Cruises in Fiji. Cougar 11 www.ssc.com.fj
Sister Ship "Cobia" also powered by 6AY-WGT operated in the Whitsundays QLD

Disclaimer: Power Equipment provides this Performance Report for general information only. This data is accurate only as to the exact date, time and specifications set out in this Report. YANMAR makes no warranties as to the performance or fuel consumption of any boat equipped with a Yanmar engine as numerous factors affect actual performance of an engine.