

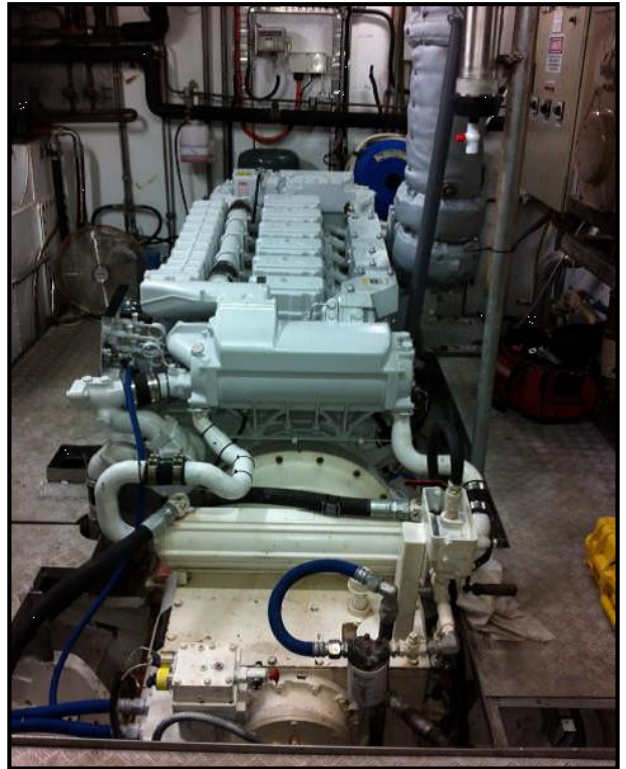
# YANMAR

## POWER PROFILE

<b>Application:</b>	<b>Commercial - Prawn</b>
<b>Vessel Construction:</b>	<b>Steel</b>
<b>Vessel Name:</b>	<b>Warlock</b>
<b>Vessel Owner:</b>	
<b>Length (LWL / LOA):</b>	<b>22m / Beam 7m</b>
<b>Weight:</b>	
<b>Engine:</b>	<b>Yanmar 6AYM-WST (H)</b>
<b>Engine Power Rating:</b>	<b>485kW (659mhp) @ 1900rpm</b>
<b>Drive configuration:</b>	<b>Twin Disc Omega MG 530 Drive</b>
<b>Gear Ratio and Model:</b>	<b>7.27:1</b>
<b>Cruise Speed /Fuel Consumption</b>	
<b>Top Speed:</b>	
<b>Propeller Size:</b>	<b>75" D x 68" P x 4 blade nozzel</b>
<b>Technician Name:</b>	<b>Nick Marsden</b>
<b>Operational Check Date:</b>	<b>19/03/2012</b>
<b>Sold by:</b>	<b>McLeod Engineering</b>
<b>Repower &amp; Installation Completed By:</b>	<b>Cairns Slipway</b>

# YANMAR

## POWER PROFILE



**Comments:**  
**Operations Check QLD #589 refers**  
**Repower 3412 Caterpillar**

Disclaimer: Power Equipment provides this Performance Report for general information only. This data is accurate only as to the exact date, time and specifications set out in this Report. YANMAR makes no warranties as to the performance or fuel consumption of any boat equipped with a Yanmar engine as numerous factors affect actual performance of an engine.