

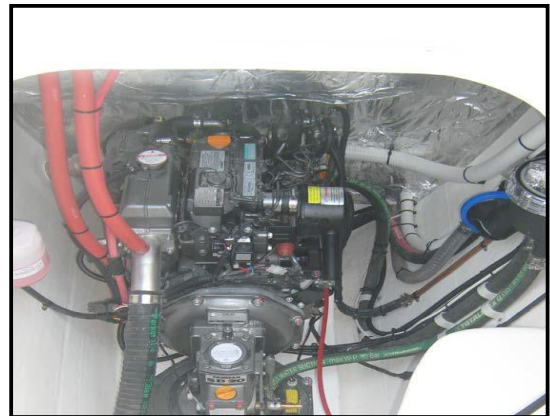
YANMAR

POWER PROFILE

Application:	Sailing Cat
Vessel Construction:	GRP
Vessel Name:	Mischief
Vessel Owner:	-
Length (LWL / LOA):	38 feet
Weight:	6.5 tonne
Engine:	Yanmar 3YM30C
Engine Power Rating:	22.1kW (30mhp) @ 3600 RPM
Drive configuration:	Saildrive x 2
Gear Ratio and Model:	2.64:1 / Yanmar SD20
Electronic Control Type:	Not Applicable
Top Speed:	8.5 knots
Propeller Size:	14 x 12 Fixed Blade x 2
Technician Name:	John Van Boven
Date of Operational check:	30th August 2010
Sold by:	Power Equipment QLD
New Installation Completed By:	Lightwave Yachts

YANMAR

POWER PROFILE



Comments:

*Another quality installation by Lightwave Yachts.
Further details on Lightwave Yachts can be found at www.lightwave.com*

Disclaimer: Power Equipment provides this Performance Report for general information only. This data is accurate only as to the exact date, time and specifications set out in this Report. YANMAR makes no warranties as to the performance or fuel consumption of any boat equipped with a Yanmar engine as numerous factors affect actual performance of an engine.