

Yes	<input type="checkbox"/>	Procurement Specifications	Inspection Standards	Quality Control Drawing	Specially Controlled Parts	Stably Controlled Parts during Initial Batch Production Period
-----	--------------------------	----------------------------	----------------------	-------------------------	----------------------------	----------------------------------------------------------------

3RD ANGLE PROJECTION

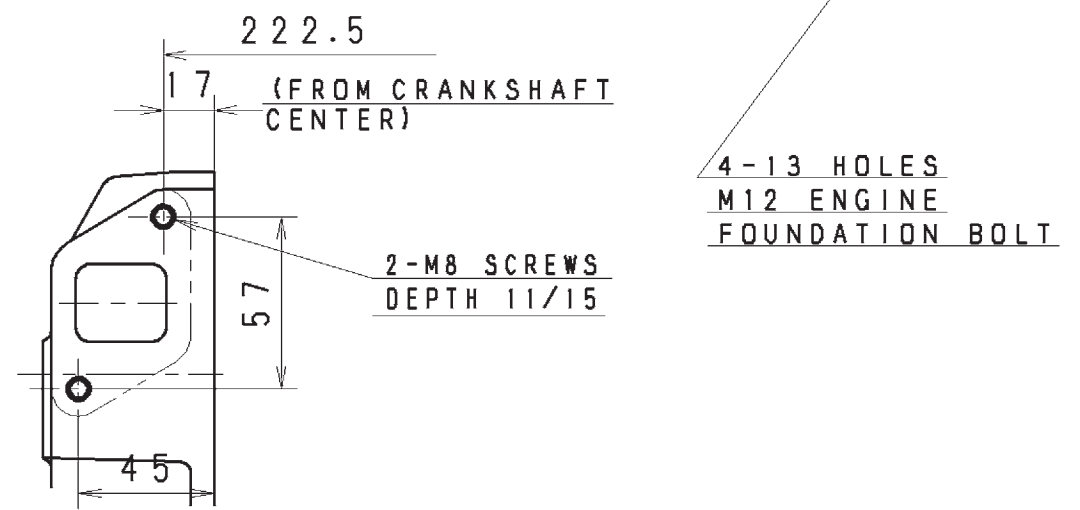
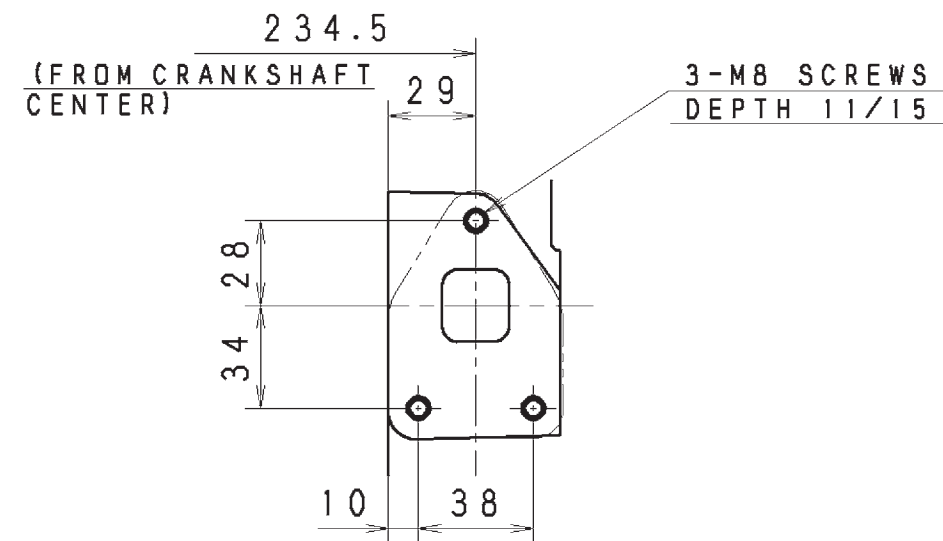
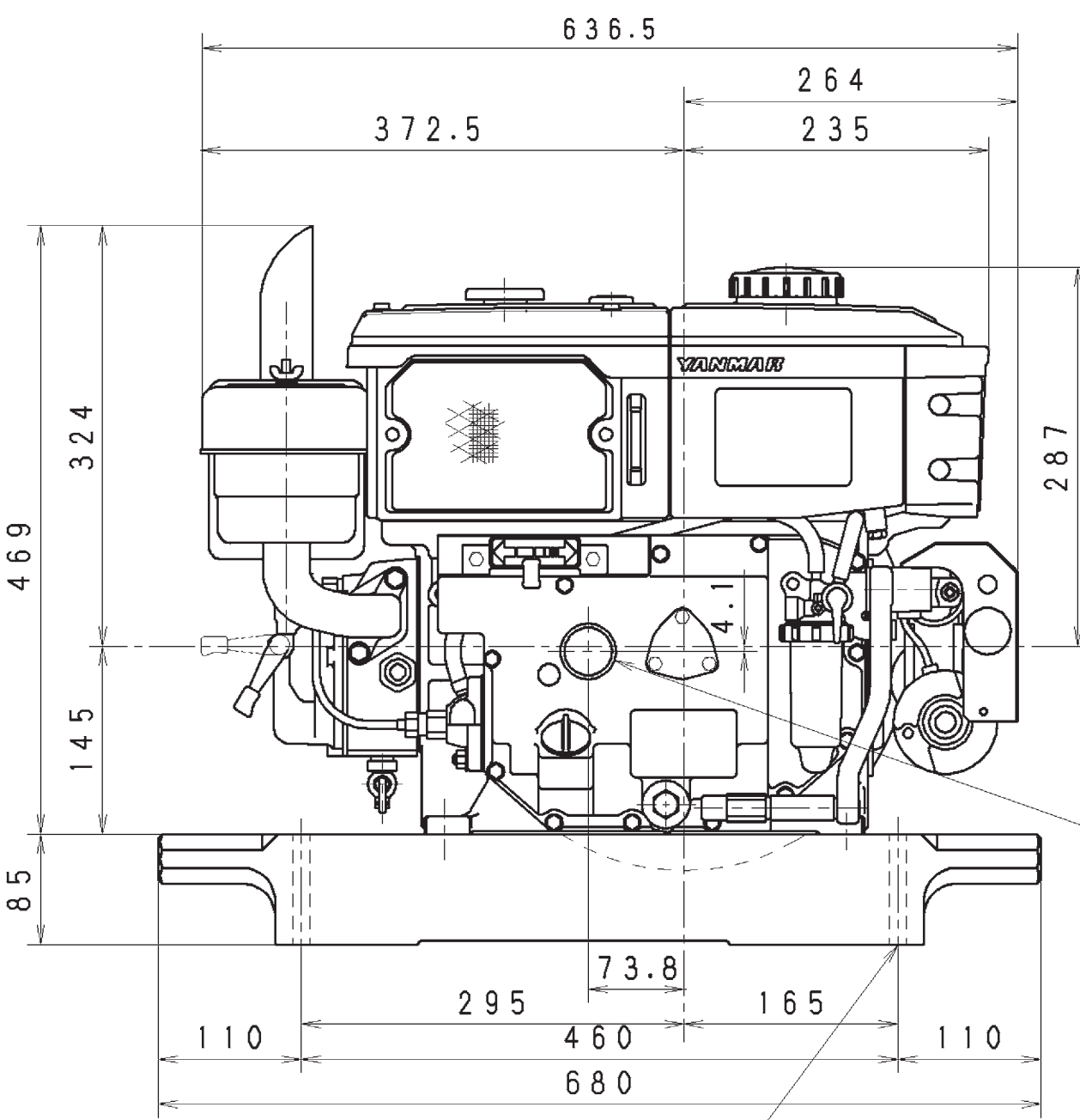
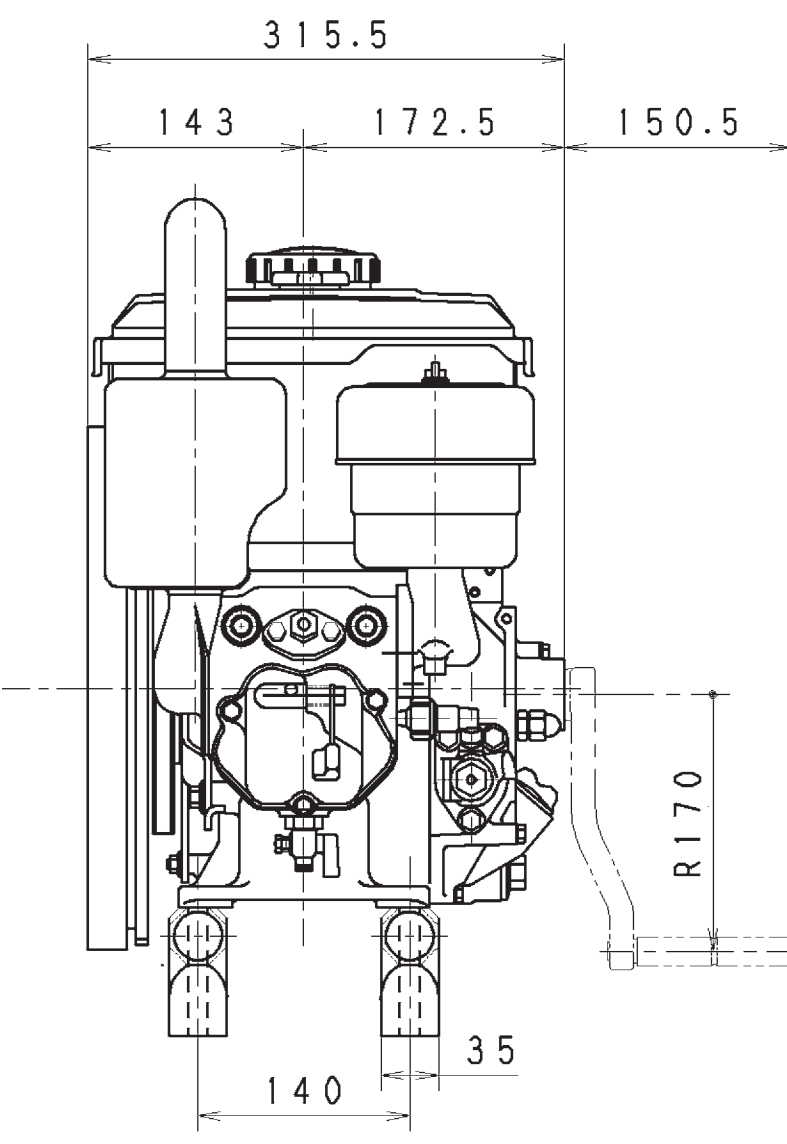
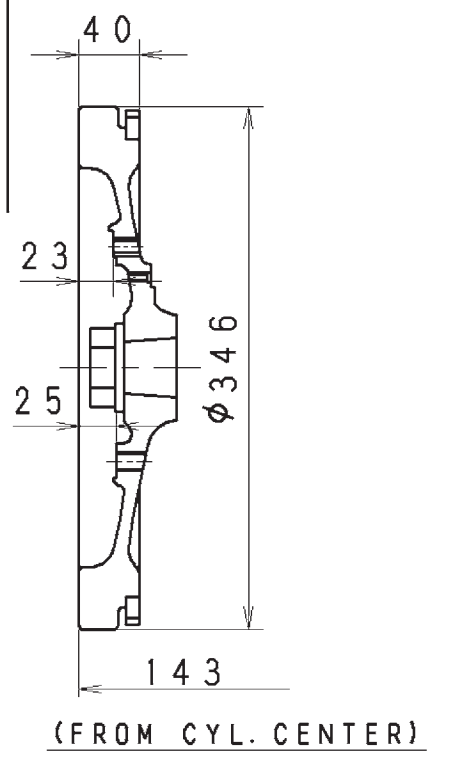
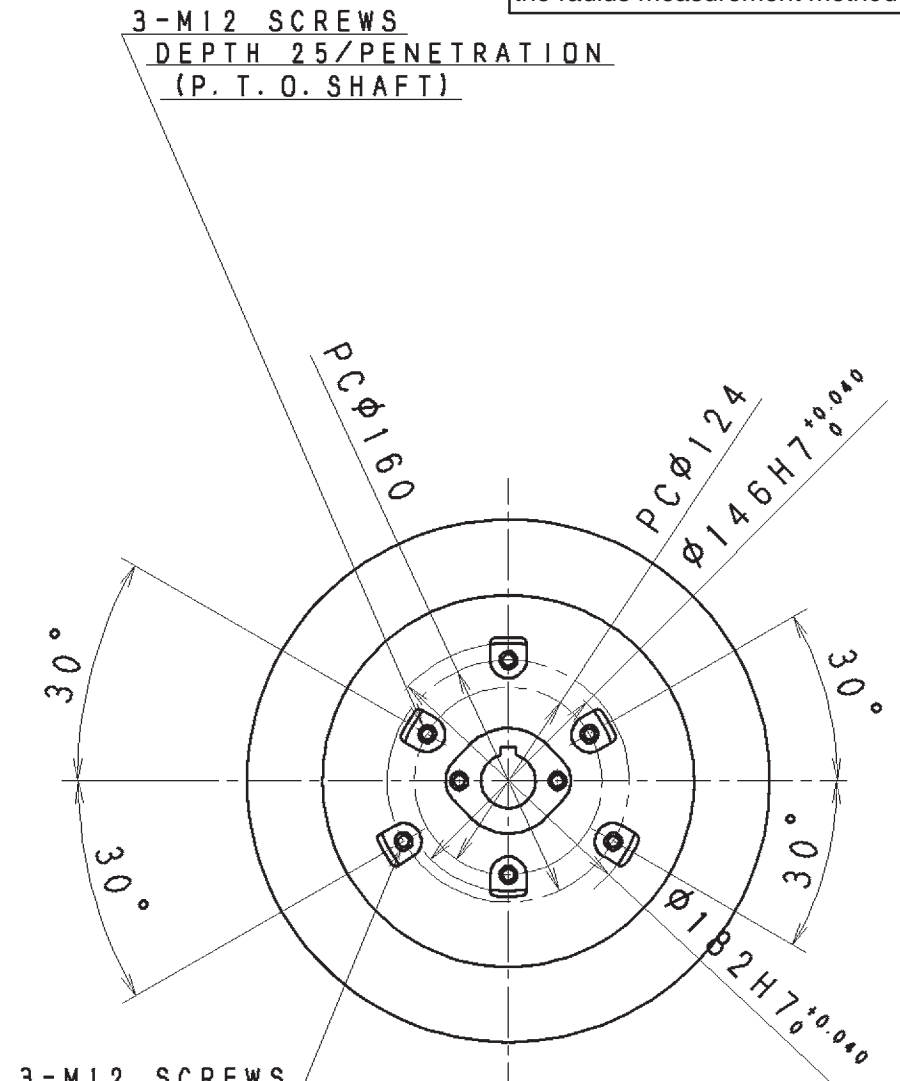
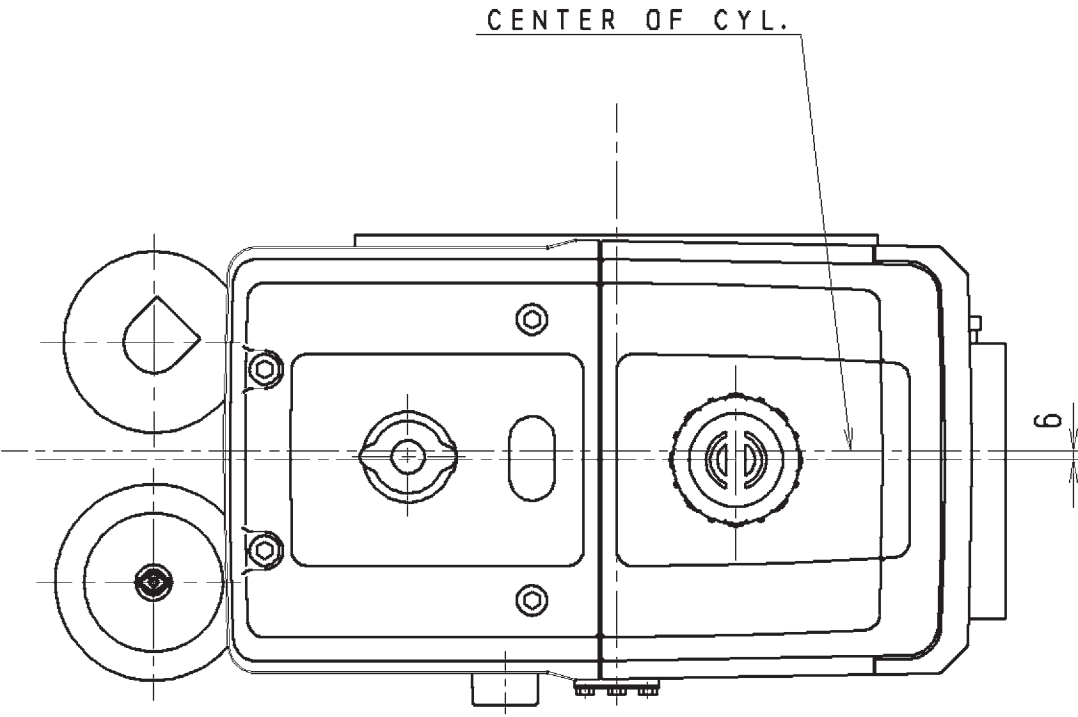
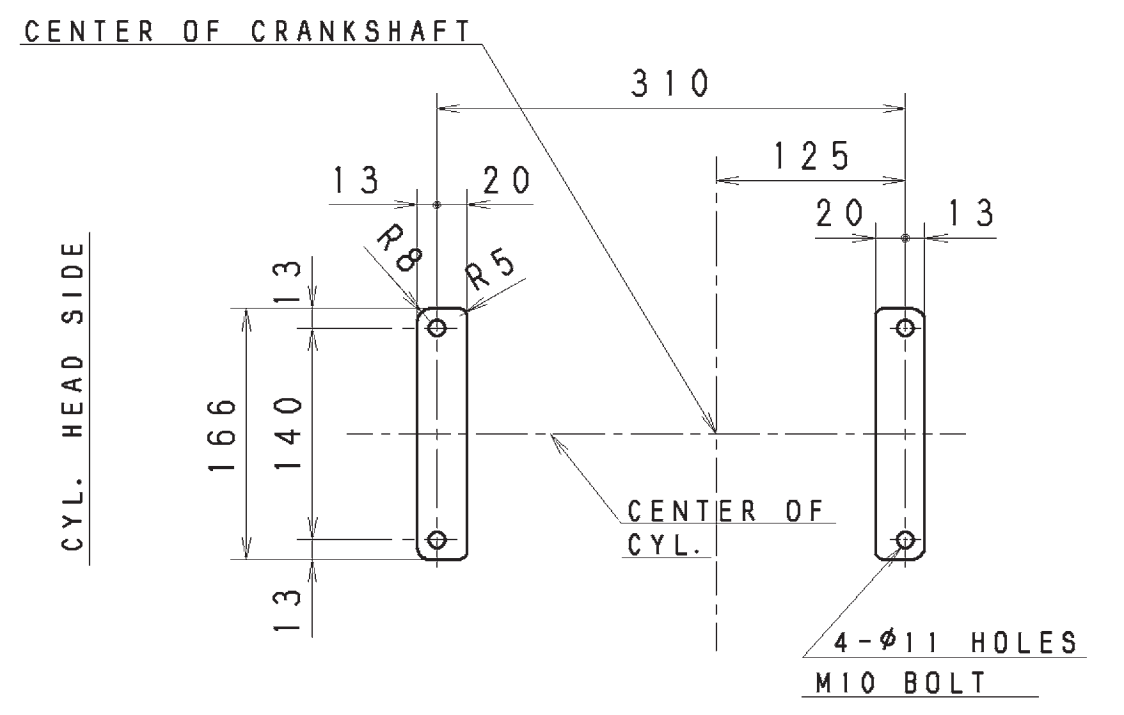
General Tolerance (mm)	Above 1	Below 4	±0.1	Above 250	Below 1000	±0.8
	Above 4	Below 16	±0.2	Above 1000	Below 2000	±1.2
	Above 16	Below 63	±0.3	Above 2000	Below 4000	±2.0
	Above 63	Below 250	±0.5			
General Tolerance (mm) (Casting)	Below 10	±1'				
	Below 50	±30'				
	Below 120	±20'				
General Tolerance (mm) (Casting)	Above 10	Below 50	±30'			
	Above 50	Below 120	±20'			
General Tolerance (mm) (Casting)	Above 120	±10'				

Shape & Dimensions Code _____ G.T.CODE M _____

Circularity and cylindricity are obtained from the radius measurement method

CAREER

(' 97. 11. 21) After modification of upper structure and starting device, (NF-97059) it will serve as Modification Type I. (NF-97060)



WEIGHT (RAW)	(± %)	HYDRAULIC TEST	MPa	MANAGER	No.1 Chief of Technology
WEIGHT (Precision %)	(± %)	PNEUMATIC TEST	MPa	Engine Development Dept.	
SEC. MANAGER		MODEL	TF 60 70 -E -E	SCALE	1/5 (1/2.5)
CHECKED	SPECIALIST	QTY.	/ /	MATERIAL	
DESIGNED	DRAWN	DATE	1997 11.21	NAME	TF60, 70-E Outline of Assembly
			OUTLINE		
YANMAR DIESEL ENGINE CO., LTD.				CODE	B2-05100-0101
ENGINE DEVELOPMENT DEPT.				Drawing Size	A2 (C)

Important Check Points	
Precision Type & Symbol	
Type	Symbol
Straightness	—
Circularity	○
Line Profile	—
Flatness	□
Cylindricity	○
Surface Profile	—
Parallelism	∥
Perpendicularity	⊥
Angularity	∠
Position	⊕
Concentricity	◎
Symmetry	∩
Circular Runout	↻
Total Runout	↻
Tolerance	—