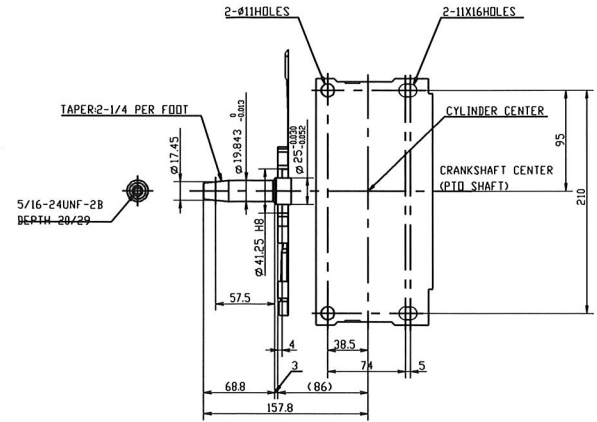
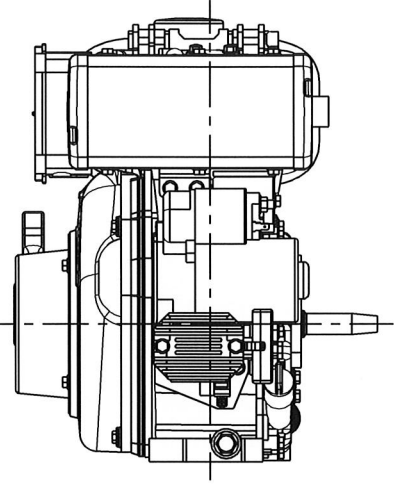
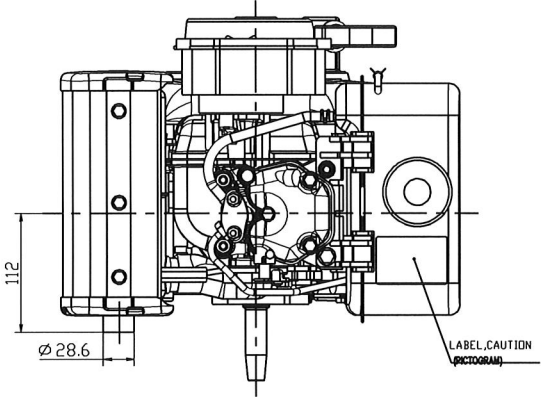


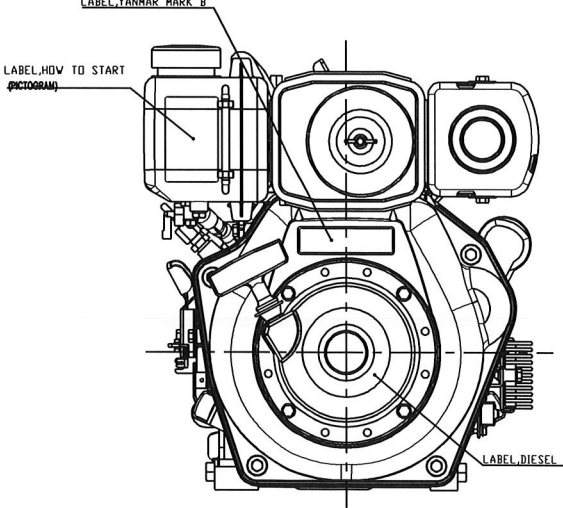
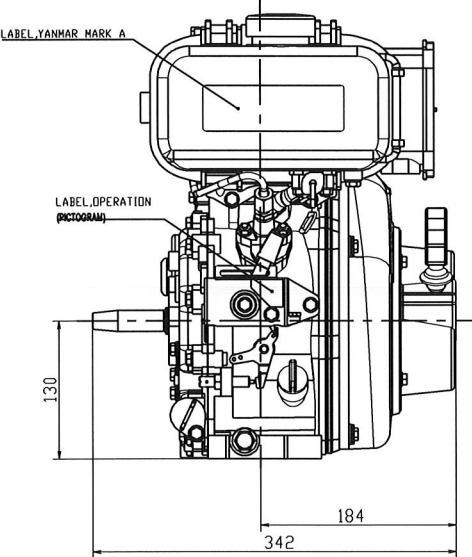
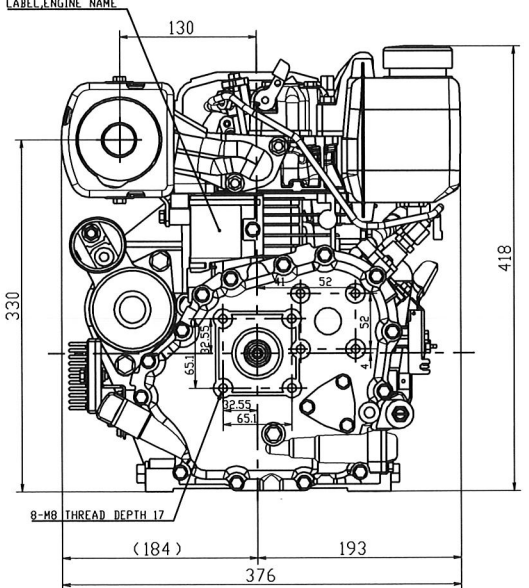
GEN. TOL.	DRIFT ANG.	PURCHASING SPECIFICATION	REQUEST FOR APPROVAL					DELIVERY DRAWING					INSPECTING STANDARD					QC-PROCESS					
			FORMA DR.	5 MAX	5 TO 10	10 TO 30	30 TO 50	120 MAX	120 TO 250	250 TO 400	400 TO 800	800 TO 1600	1600 TO 3150	L-CAST	120 MAX	120 TO 250	250 TO 400	400 TO 800	800 TO 1600	1600 TO 3150	ANG-CHIP	10 MAX	HIREG.
2/100	3/100		SANDMOLD	±1.0	±1.5	±2.0	±3.0	±3.5	±1.0	±1.5	±2.0	±3.0	±4.0	±6.0	0.5 TO 6	±0.1	400 TO 1000	±1.2	10 TO 50	±30MIN.	10 TO 50	±50	±30MIN.
			SHELL	±0.8	±1.0	±1.5	±2.0	±2.0	±1.0	±1.5	±2.0	±3.0	±4.0	±6.0	6 TO 30	±0.2	1000 TO 2000	±2.0	50 TO 120	±20MIN.	50 TO 120	±120	±20MIN.
																2000 TO 4000	±2.0	120 TO 400	±10MIN.	120 TO 400	±400	±10MIN.	

FIGURE		GT.CODE	
DIMENSION			

CAREER



ENGINE MOUNTING PLATE AND PTO SHAFT SEEN THROUGH FROM THE TOP OF THIS ENGINE



With respect to the use of environmentally hazardous substances for the parts, the substances to use shall conform to the instructions of use for 'Environmentally Hazardous Substances'.

3D-CAD

NOTICE

✓	FORMAL
✓	DESIGN
✓	ENGINEERING
✓	PRODUCTION
✓	SALES
✓	MARKETING
✓	RESEARCH
✓	QUALITY CONTROL
✓	QUALITY ASSURANCE
✓	ENVIRONMENTAL
✓	SAFETY
✓	LEGAL
✓	FINANCE
✓	GENERAL
✓	REVISION
✓	APPROVAL

WEIGHT (RAW)	(# 2)	kg	MANAGER	SMANAGER
WEIGHT (CALC.)	(# 2)	kg	SCALE	FREE
ENGINEER	MANAGER	MODEL		MATERIAL
CHECKED	SPECIALIST	QTY		
DESIGNED	DRAWN	DATE: Y.M.D.	NAME	OUTLINE
R. Nambu	H. Ogawa	17 FEB. 2011		L48N5-GETMAYI OUTLINE
			FORM	B2-14720-0380
				A1