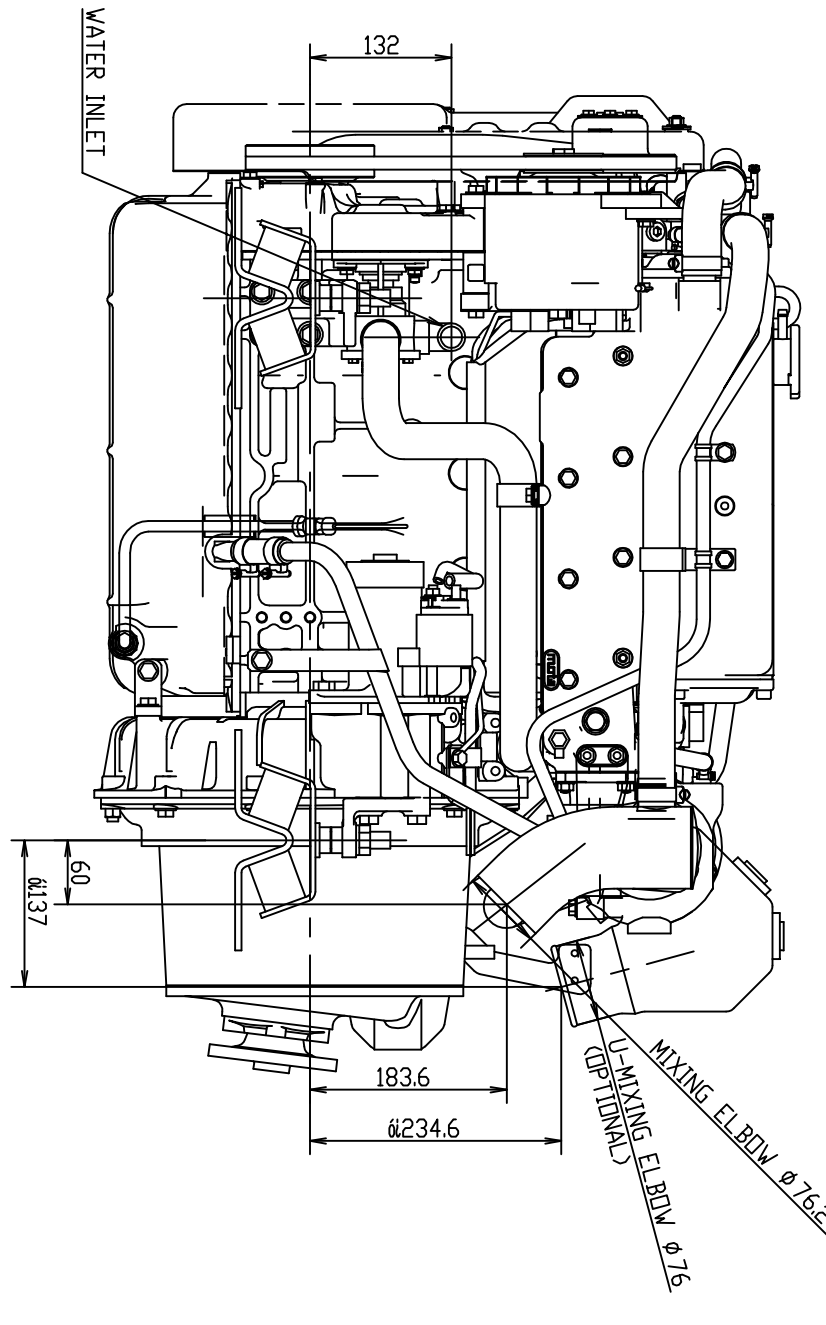
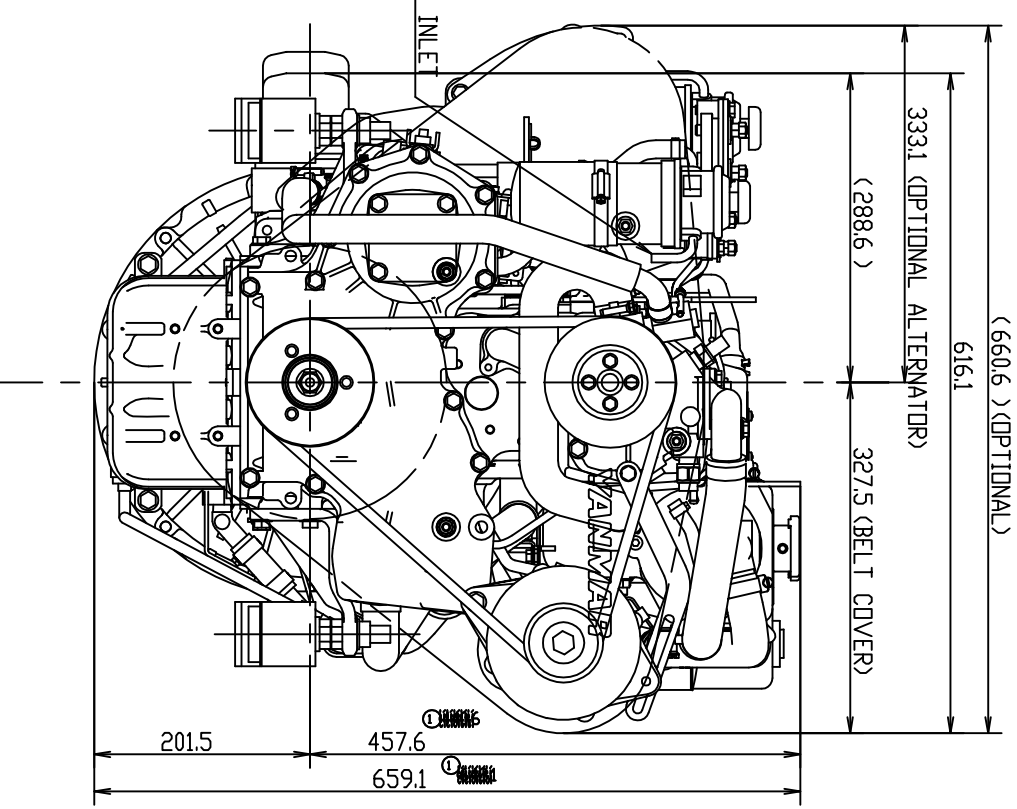
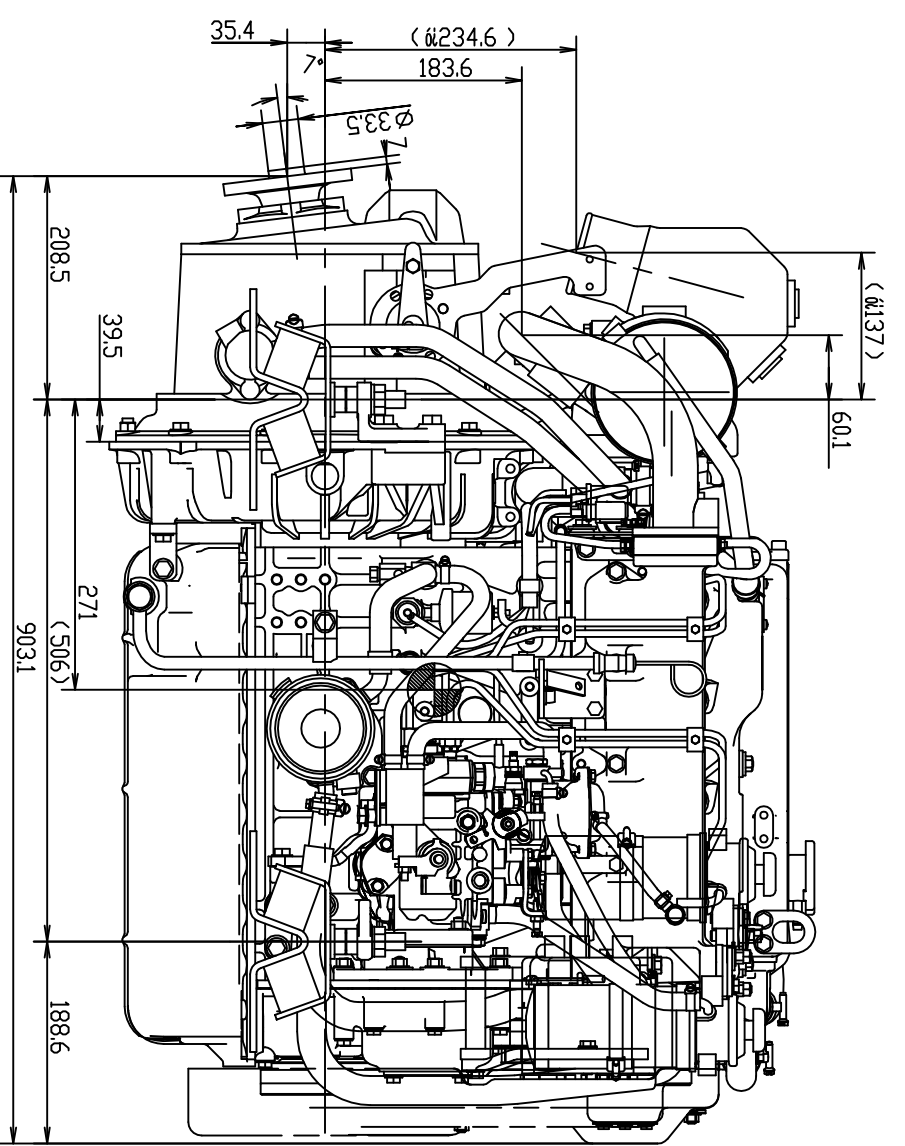
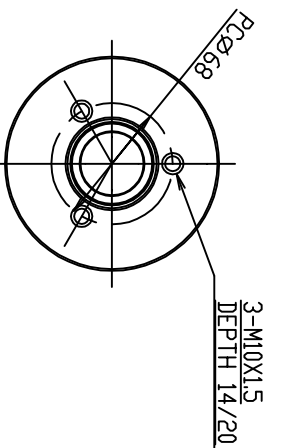


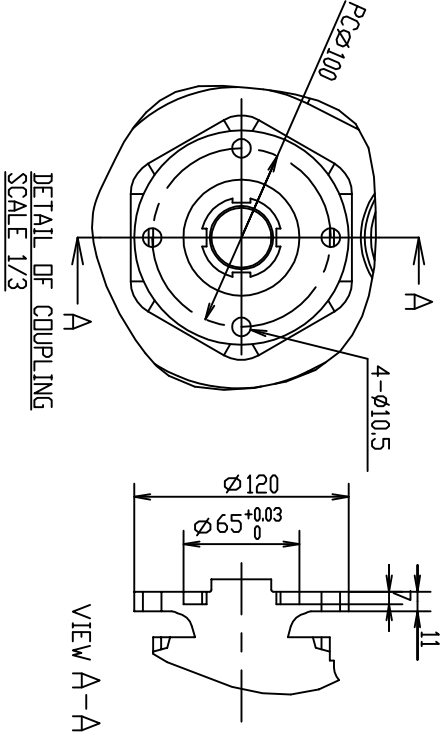
SPACE FOR REMOVAL OF OIL FILTER



DIRECTION OF ROTATION



DETAIL OF PULLEY SCALE 1:3 VIEWED FROM A



DETAIL OF COUPLING SCALE 1:3

- NOTE
- 1) Dwg. shows mounting blocks at original height. ENGINE WEIGHT WILL COMPRESS BLOCKS BY 4MM APPROX.
 - 2) MOUNTING BLOCKS ARE EQUIPPED FOR STANDARD ACCESSORY.
 - 3) THE FIGURES MARKED WITH Ø SHOW THE DIMENSIONS WITH U-MIXING ELBOW OR OPTIONAL COUPLING.
 - 4) ⚙️ SHOWS THE CENTER OF GRAVITY.

SPECIFICATIONS

Model	4JH4-TE	
Continuous Power(KISD 8665)	kW/min ⁻¹	50.2/3101
Fuel Stop Power	Propeller shaft(kISD 8665) kW/min ⁻¹	53.0/3200
	Crankshaft(kISD 8665) kW/min ⁻¹	55.2/3200
Reduction ratio		1.47 2.14 2.63
Dry mass	kg(lb)	Approx. 232(511)
Direction of Crankshaft rotation		Counter-clockwise

CHECKED	SPECIALIST	MODEL	QTY	SCALE
Y.Sato K.Shigo	if	4JH4-TE	1	1:5
DRAWN	BATEMAD	NAME		
MAS/mho	K.Shinzu	4JH4-TE OUTLINE (WITH KM4A2 MARINE GEAR)		

YANMAR CO.,LTD. DEVELOPMENT DEPT.	CODE	REV1	SIZE
	BE-29671-0850		A1

3D-CAD	NOTICE	ORIENTATION	LOCATION	RUN-OUT
☑	☑	☑	☑	☑