

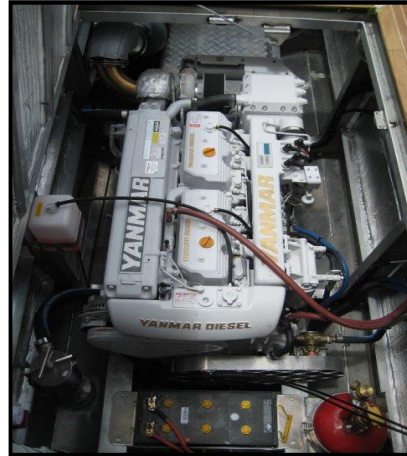
# YANMAR

## POWER PROFILE

<b>Application:</b>	<b>Pleasure Craft</b>
<b>Vessel Construction:</b>	<b>Plate Aluminium</b>
<b>Vessel Name:</b>	<b>Haniham</b>
<b>Vessel Owner:</b>	<b>-</b>
<b>Length (LWL / LOA):</b>	<b>12m</b>
<b>Weight:</b>	<b>12,400 kg</b>
<b>Engine:</b>	<b>Yanmar 6CXM-GTE2 x 2</b>
<b>Engine Power Rating:</b>	<b>368kW (500mhp) @ 2900 RPM</b>
<b>Drive configuration:</b>	<b>Water Jet HJ292 / Hamilton Jet x 2</b>
<b>Gear Ratio and Model:</b>	<b>1.0:1 Direct Coupling – No Gear</b>
<b>Electronic Control Type:</b>	<b>N/A</b>
<b>Cruise Speed/Fuel Consumption</b>	<b>26 knots @ 2600rpm</b>
<b>Top Speed:</b>	<b>34.5 knots @ 3000rpm</b>
<b>Propeller Size:</b>	<b>N/A</b>
<b>Technician Name:</b>	<b>Nick Marsden</b>
<b>Date of Operational check:</b>	<b>10<sup>th</sup> November 2011</b>
<b>Sold by:</b>	<b>Power Equipment Nth QLD</b>
<b>New Installation Completed By:</b>	<b>Cairns Custom Craft – Steve Allard</b>

# YANMAR

## POWER PROFILE



### **Comments:**

*Operational Check # QLD 512 refers.*

*Vessel commissioned for South Pacific Island customer.*

*Centa FH Series Flywheel & Housing Drive Coupling fitted # FH-3A-R136-011-150*

Disclaimer: Power Equipment provides this Performance Report for general information only. This data is accurate only as to the exact date, time and specifications set out in this Report. YANMAR makes no warranties as to the performance or fuel consumption of any boat equipped with a Yanmar engine as numerous factors affect actual performance of an engine.