

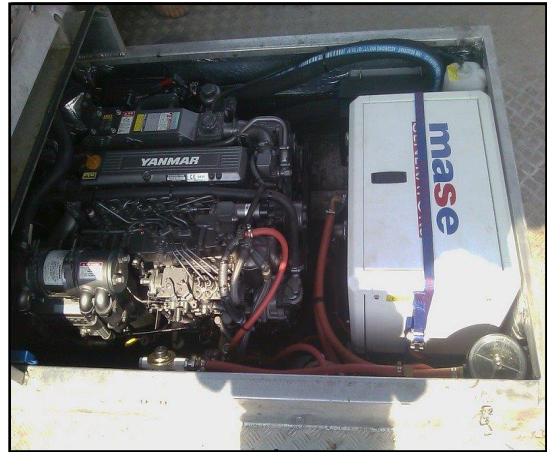
YANMAR

POWER PROFILE

Application:	Light Duty Commercial
Vessel Construction:	Plate Aluminium
Vessel Name:	-
Vessel Owner:	Stanage Bay Marine
Length (LWL / LOA):	9M - Cairns Custom Craft Tri-Hull
Weight:	4.5T approx
Engine:	Yanmar 4LHA-STZP x 1
Engine Power Rating:	240mhp (177kW) @ 3300 RPM
Drive configuration:	Stern Drive x 1
Gear Ratio and Model:	2.00 : 1 / Mercruiser Bravo 2X
Cruise Speed /Fuel Consumption	15 knots
Top Speed:	21.4 knots
Propeller Size:	19.75 x 19RH B2 Aluminium
Technician Name:	Andrew Luscombe
Date of Operational check:	21st September 2011
Sold by:	Power Equipment QLD
Repower & Installation Completed By:	Stanage Bay Marine

YANMAR

POWER PROFILE



Comments:

Operational Check # QLD 571 refers.

*To be used as a crabbing vessel out of Stanage Bay in QLD
Mase IS 5 Generator also fitted.*

Disclaimer: Power Equipment provides this Performance Report for general information only. This data is accurate only as to the exact date, time and specifications set out in this Report. YANMAR makes no warranties as to the performance or fuel consumption of any boat equipped with a Yanmar engine as numerous factors affect actual performance of an engine.