

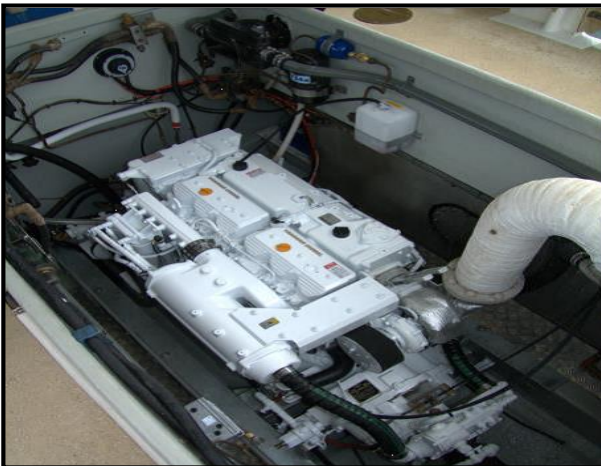
# YANMAR

## POWER PROFILE

<b>Application:</b>	<b>Commercial Fishing</b>
<b>Vessel Construction:</b>	<b>GRP</b>
<b>Vessel Name:</b>	
<b>Vessel Owner:</b>	
<b>Length (LWL / LOA):</b>	<b>41' / 38'</b>
<b>Weight:</b>	<b>12,000kg</b>
<b>Engine:</b>	<b>Yanmar 6CXBM-GT (L)</b>
<b>Engine Power Rating:</b>	
<b>Drive configuration:</b>	<b>Shaft</b>
<b>Gear Ratio and Model:</b>	<b>2.88 : 1</b>
<b>Cruise Speed /Fuel Consumption</b>	<b>12&gt;16 knots</b>
<b>Top Speed:</b>	<b>20.5 knots</b>
<b>Propeller Size:</b>	<b>Veem 33" x 31.5" x 4 blade</b>
<b>Technician Name:</b>	<b>Steve Parsons / Craig Hurst</b>
<b>Date of Operational check:</b>	<b>14/06/2013</b>
<b>Sold by:</b>	<b>Craig Hurst Engineering</b>
<b>Repower &amp; Installation Completed By:</b>	<b>Craig Hurst Engineering</b>

# YANMAR

## POWER PROFILE



**Comments:**

Disclaimer: Power Equipment provides this Performance Report for general information only. This data is accurate only as to the exact date, time and specifications set out in this Report. YANMAR makes no warranties as to the performance or fuel consumption of any boat equipped with a Yanmar engine as numerous factors affect actual performance of an engine.