

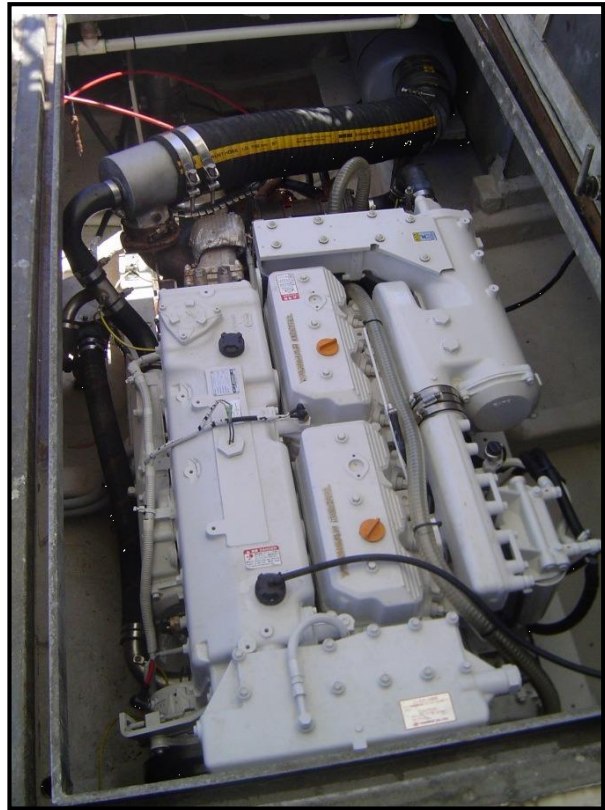
# YANMAR

## POWER PROFILE

<b>Application:</b>	<b>Charter Fishing</b>
<b>Vessel Construction:</b>	<b>Mono Hull GRP</b>
<b>Vessel Name:</b>	<b>Early Riser</b>
<b>Vessel Owner:</b>	
<b>Length (LWL / LOA):</b>	<b>11.8M</b>
<b>Weight:</b>	<b>6.75T</b>
<b>Engine:</b>	<b>Yanmar 6CXBM-GT</b>
<b>Engine Power Rating:</b>	
<b>Drive configuration:</b>	<b>Shaft</b>
<b>Gear Ratio and Model:</b>	<b>2.005 : 1</b>
<b>Cruise Speed /Fuel Consumption</b>	<b>18&gt;20 knots</b>
<b>Top Speed:</b>	<b>23 knots</b>
<b>Propeller Size:</b>	<b>27" x 25"</b>
<b>Technician Name:</b>	<b>Ian Mills</b>
<b>Date of Operational check:</b>	<b>17/01/2012</b>
<b>Sold by:</b>	<b>Britton Marine</b>
<b>Repower &amp; Installation Completed By:</b>	<b>Owner</b>

# YANMAR

## POWER PROFILE



**Comments:**

*The customer is very happy with the performance and economy of his new YANMAR 6CXBM-GT engine. When compared to the old SRM80 IVECO we are saving over 11 litres of fuel a day but with higher vessel speeds when cruising or top end.*

Disclaimer: Power Equipment provides this Performance Report for general information only. This data is accurate only as to the exact date, time and specifications set out in this Report. YANMAR makes no warranties as to the performance or fuel consumption of any boat equipped with a Yanmar engine as numerous factors affect actual performance of an engine.