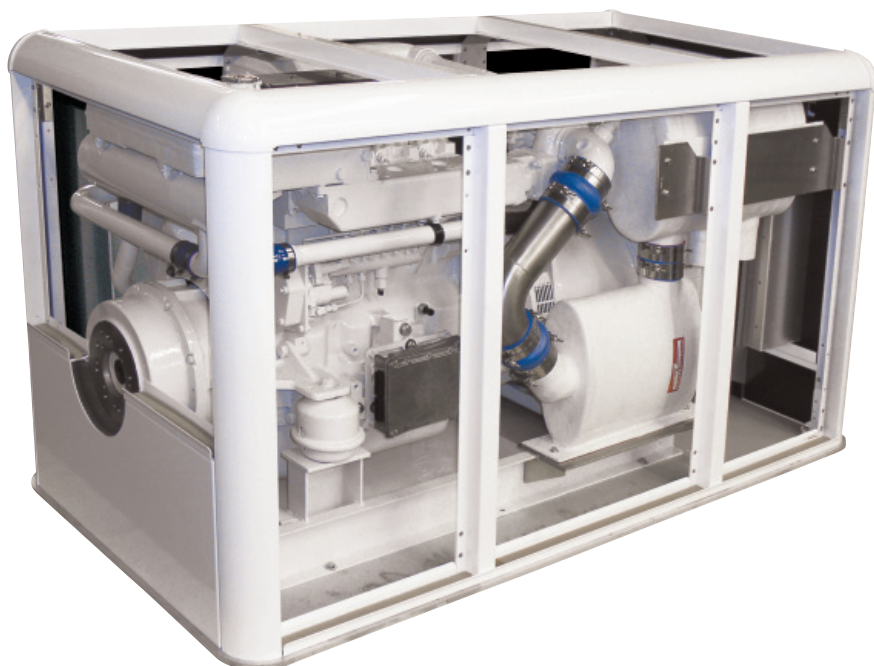




available for
26 kW
to
185 kW

One more reason...



IN|SEP For Northern Lights Generators

Northern Lights generator sets are recognized world wide as the state of the art in onboard power generation. Northern Lights' line of sound enclosures provide the finest possible sound attenuation on the market. Thanks to the innovative InSep system, your generators exhaust system can seamlessly integrate into the generator itself.

This ingenious system permits the generator set's crucial lift muffler and gas water separator to be placed entirely inside the sound enclosure. Noise signatures of both machine and exhaust system are reduced dramatically.

InSep components are housed completely within the sound enclosure. By creating a more self-contained sound attenuation and power generation unit, InSep saves precious vessel space. With InSep, the only connections necessary outside of the enclosure are the water outlet and the dry, cold exhaust gas hose. The remainder of the exhaust system is housed safely and quietly in the Northern Lights sound enclosure.

Noise reduction. Turnkey installation. Space saving features. These are the qualities that make InSep an important innovation in power generation.

STANDARD FEATURES

- Turnkey builder installation that simplifies engine room lay out and maximizes space.
- All components are reinforced and are connected to minimize machine motion-related stress.
- Internal volumes and component placements have been carefully designed and developed in order to maximize protection from water intrusion.
- Available for Northern Lights marine generator sets between 30 and 185 kW(60Hz), or 26 and 155 kW(50Hz) when installed in a Northern Lights sound enclosure.

| GENERATOR MODEL | IN SEP PART # | SOUNDSHIELD DIMENSIONS (LxWxH) | SS WEIGHT |
|--|---------------|---|-------------------|
| M944W3 60 Hz / 50 Hz 30 kW / 26 kW | 05-71200 | 61.0 x 31.3 x 32.9 in 1549 x 795 x 834 mm | 170 lbs 77 kg |
| M1064D 60 Hz / 50 Hz 40 kW / 33 kW | 05-79430 | 80.9 x 41.25 x 45.6 in 2054 x 1048 x 1159 mm | 657 lbs 298 kg |
| M1064T1 60 Hz / 50 Hz (3 & 1 ph) 55 kW / 50 kW | 05-79440 | 80.9 x 41.25 x 45.6 in 2054 x 1048 x 1159 mm | 657 lbs 298 kg |
| M1064T2 60 Hz / 50 Hz (3 ph) 65 kW / 55 kW | 05-79440 | 80.9 x 41.25 x 45.6 in 2054 x 1048 x 1159 mm | 657 lbs 298 kg |
| M1064T2 60 Hz / 50 Hz (1 ph) 65 kW / 55 kW | 05-79450 | 80.9 x 41.25 x 45.6 in 2054 x 1048 x 1159 mm | 657 lbs 298 kg |
| M1064A 60 Hz / 50 Hz (3 ph) 92 kW / 67 kW | 05-79450 | 80.9 x 41.25 x 45.6 in 2054 x 1048 x 1159 mm | 657 lbs 298 kg |
| M1064H 60 Hz / 50 Hz (3 ph) 99 kW / 90 kW | 05-79450 | 80.9 x 41.25 x 45.6 in 2054 x 1048 x 1159 mm | 657 lbs 298 kg |
| M1066T 60 Hz / 50 Hz (3 ph) 99 kW / 80 kW | 05-79645 | 89.9 x 40.3 x 43.5 in 2283 x 1024 x 1105 mm | 725 lbs 329 kg |
| M1066T 60 Hz / 50 Hz (1 ph) 99 kW / 80 kW | 05-79650 | 90.9 x 46.0 x 50.5 in 2309 x 1168 x 1283 mm | 798 lbs 362 kg |
| M1066A1 60 Hz - 50 Hz (3 & 1 ph) 130 kW / 105 kW | 05-79650 | 90.9 x 46.0 x 50.5 in 2309 x 1168 x 1283 mm | 798 lbs 362 kg |
| M1066A2 60 Hz / 50 Hz (3 ph) 145 kW / 115 kW | 05-79650 | 90.9 x 46.0 x 50.5 in 2309 x 1168 x 1283 mm | 798 lbs 362 kg |
| M1066A3 60 Hz (3 ph) 160 kW | 05-79650 | 90.9 x 46.0 x 50.5 in 2309 x 1168 x 1283 mm | 798 lbs 362 kg |
| M1066H 60 Hz / 50 Hz (3 ph) 185 kW / 155 kW | 05-79650 | 90.9 x 46.0 x 50.5 in 2309 x 1168 x 1283 mm | 798 lbs 362 kg |

Dealer

4420 14th Ave. NW., Seattle WA 98107
Tel: (206) 789-3880 • 1-800-762-0165 • Fax: (206) 782-5455
Information and dimensions subject to change without notice.
Northern Lights and Lugger are registered trademarks
of Northern Lights, Inc.
© 2007 All rights reserved. Litho USA. L656 12/07



www.northern-lights.com