

Yes	Procurement Specifications	Inspection Standards	Quality Control Drawing	Specially Controlled Parts	Stably Controlled Parts during Initial Batch Production Period
General Tolerance Length (Cutting)	Above 1 Below 4 ±0.1 Above 250 Below 1000 ±0.8	General Tolerance Angle (Cutting)	Below 10 ±1° Above 10 Below 50 ±30'		
(mm)	Above 4 Below 16 ±0.2 Above 1000 Below 2000 ±1.2		Above 50 Below 120 ±20'		
	Above 16 Below 63 ±0.3 Above 2000 Below 4000 ±2.0		Above 120 ±10'		
	Above 63 Below 250 ±0.5				

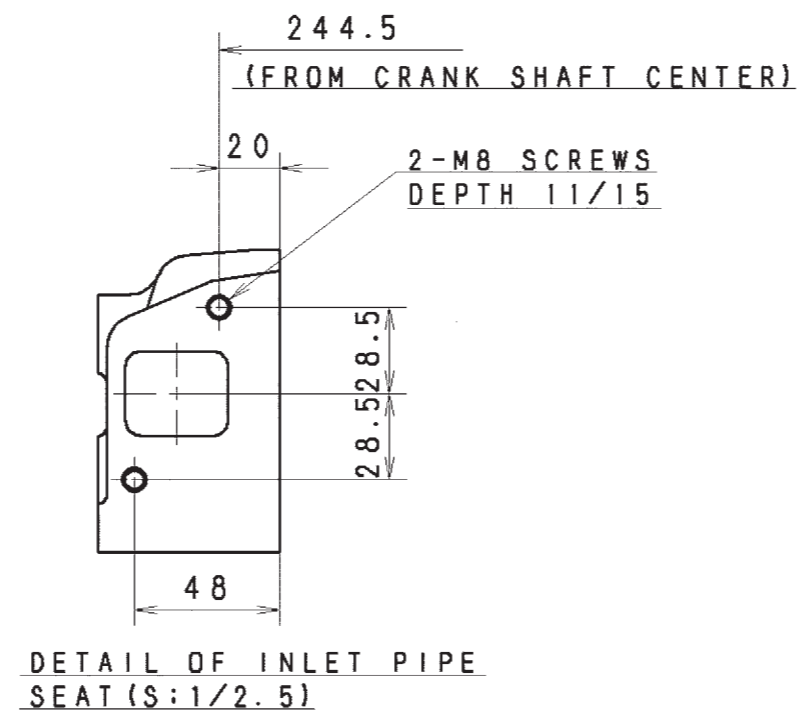
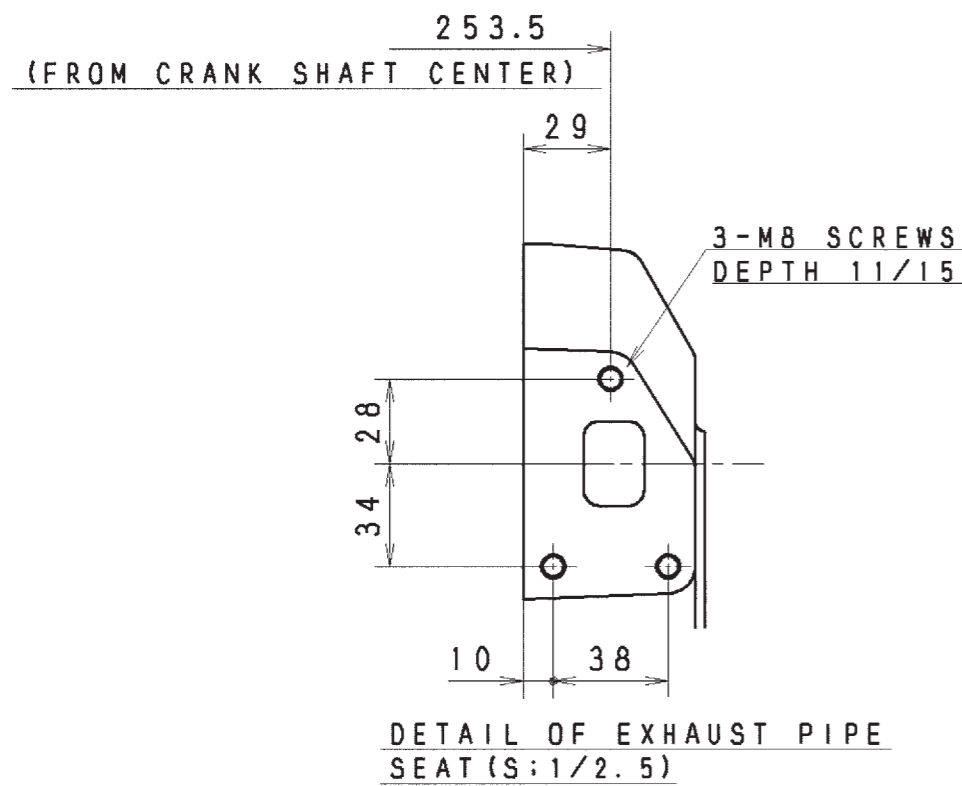
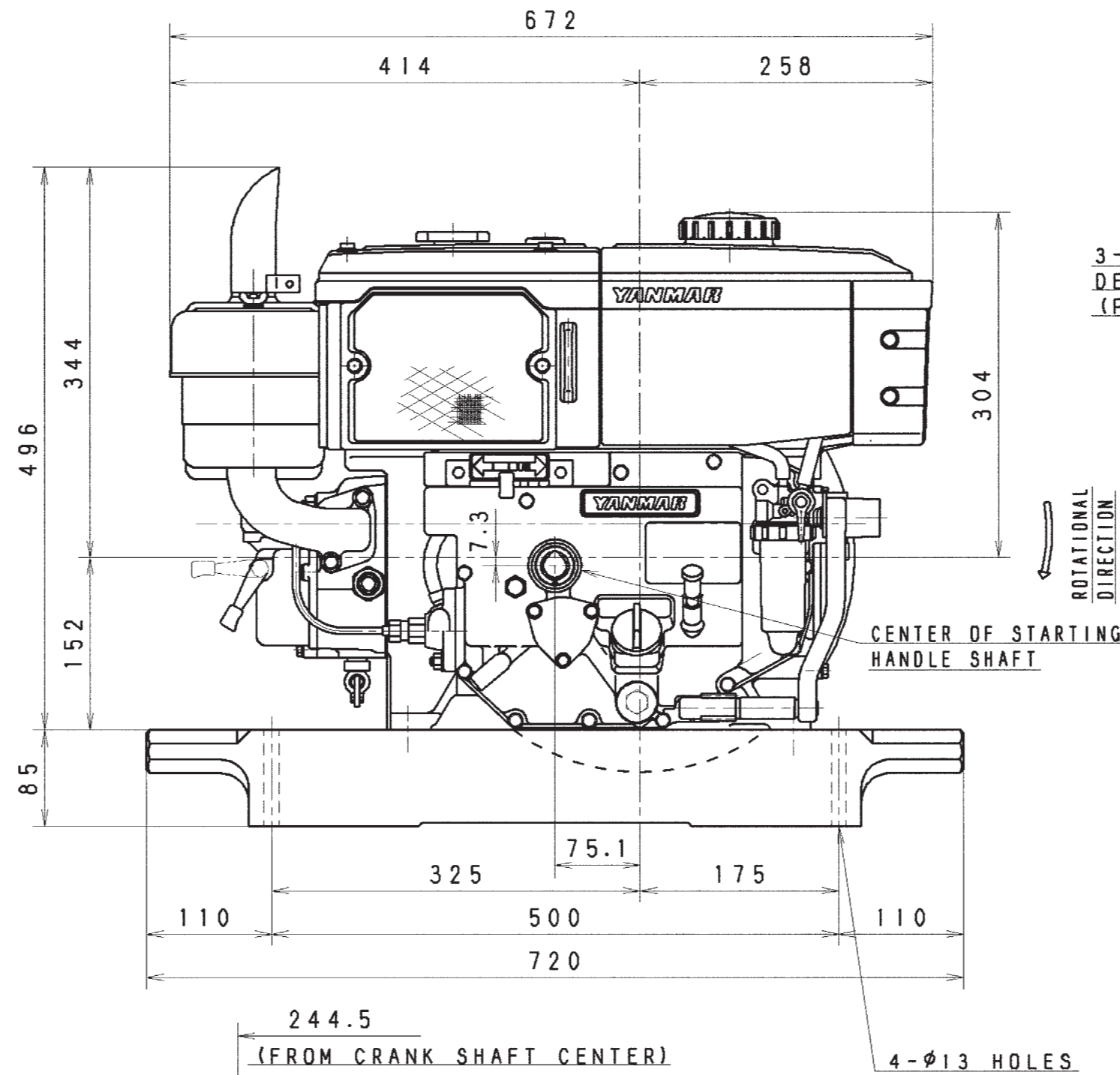
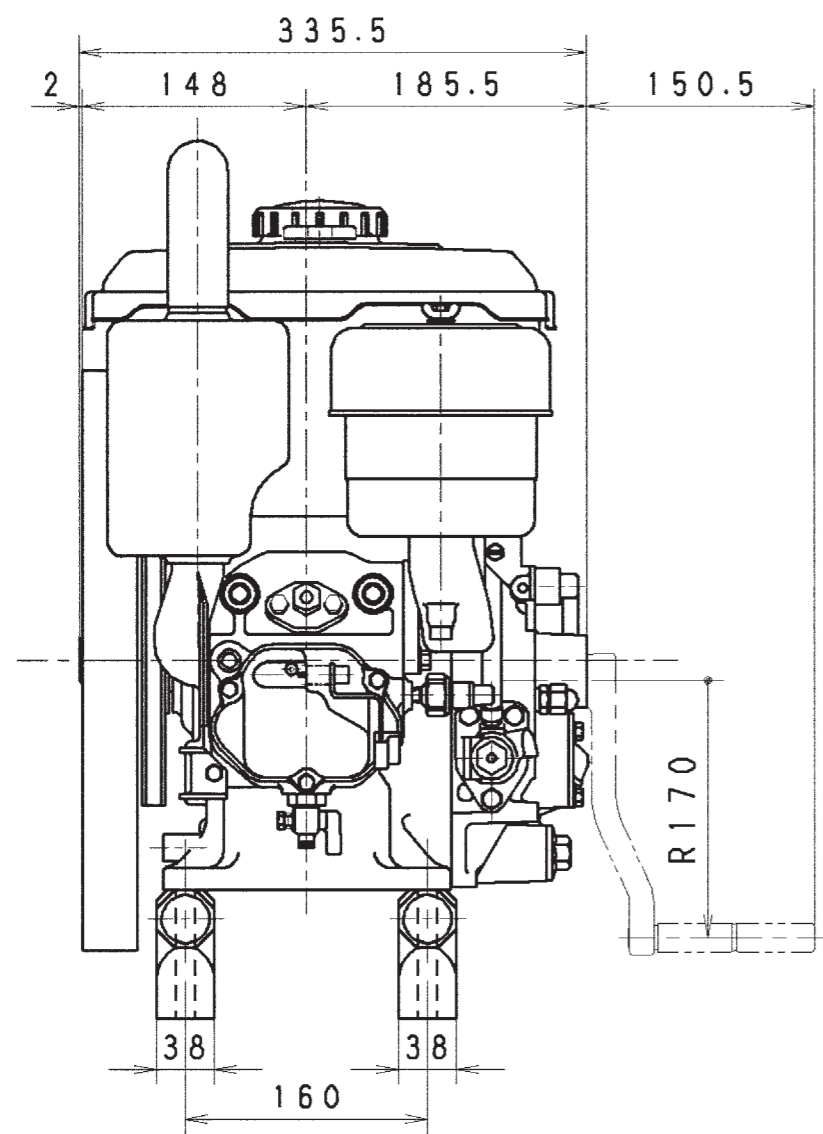
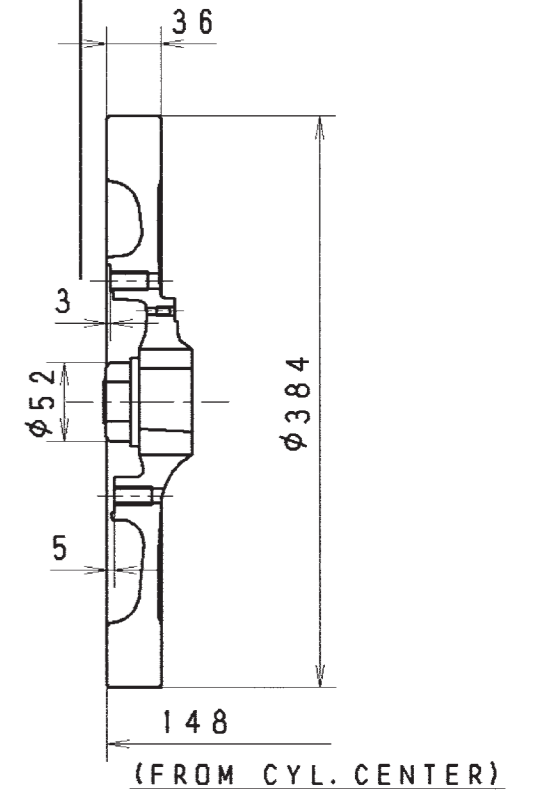
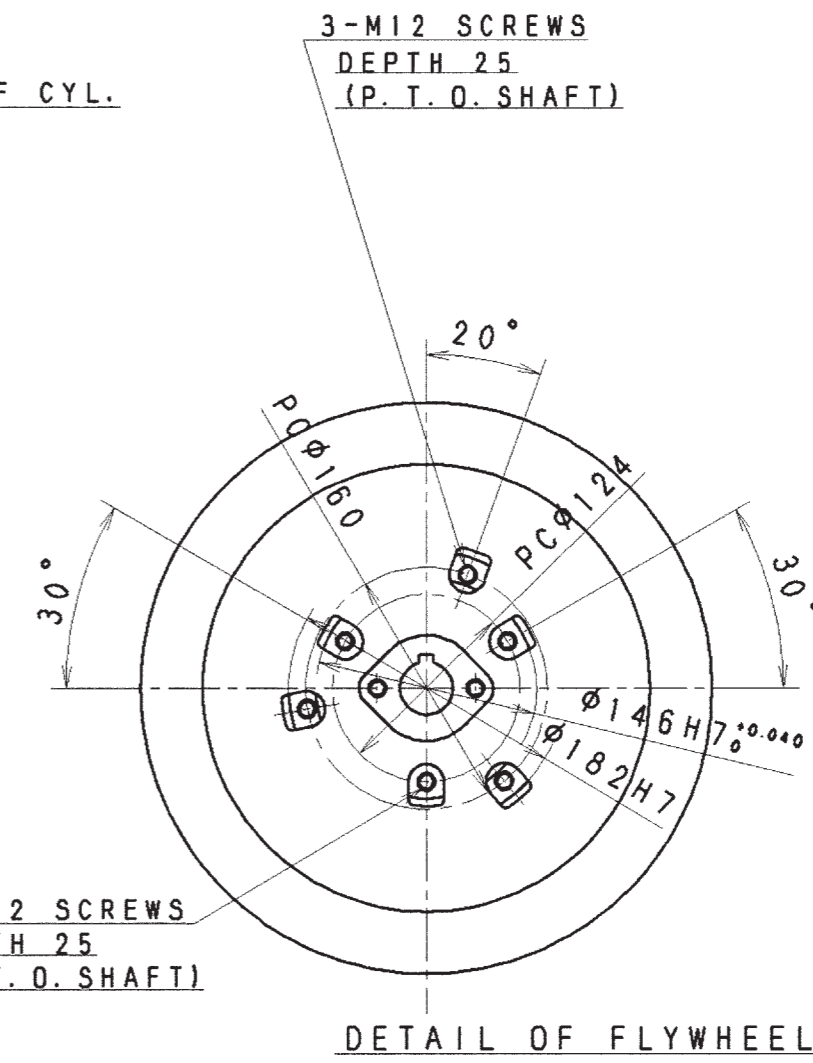
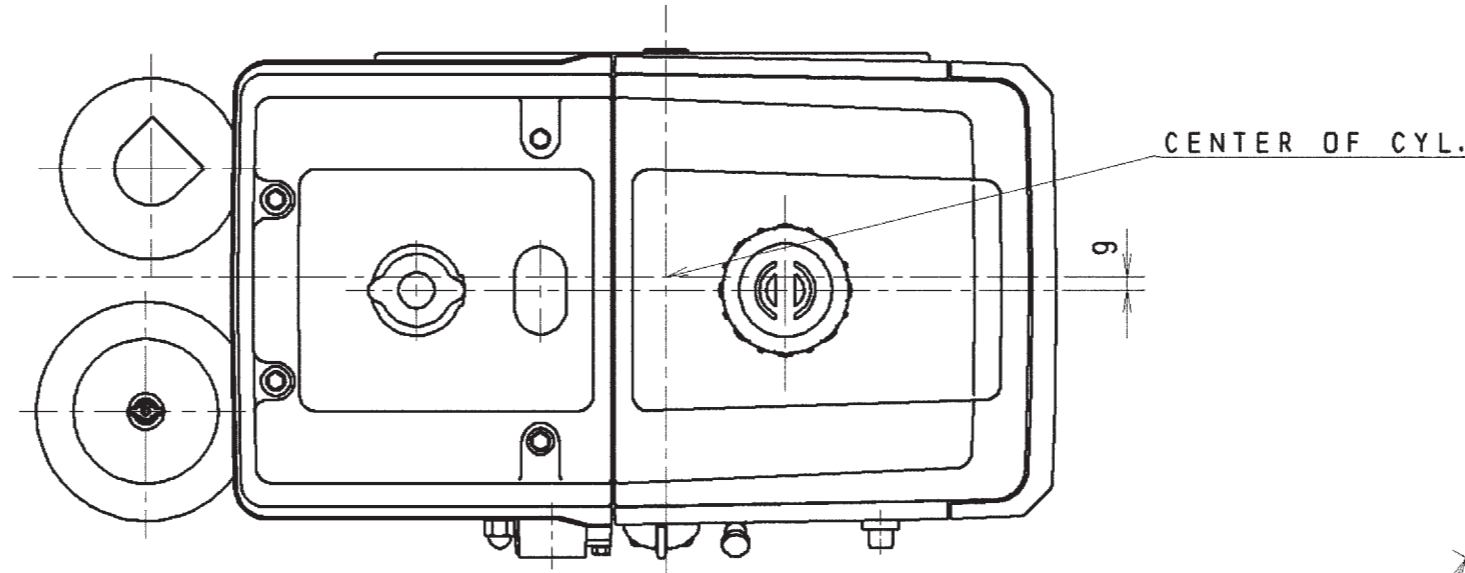
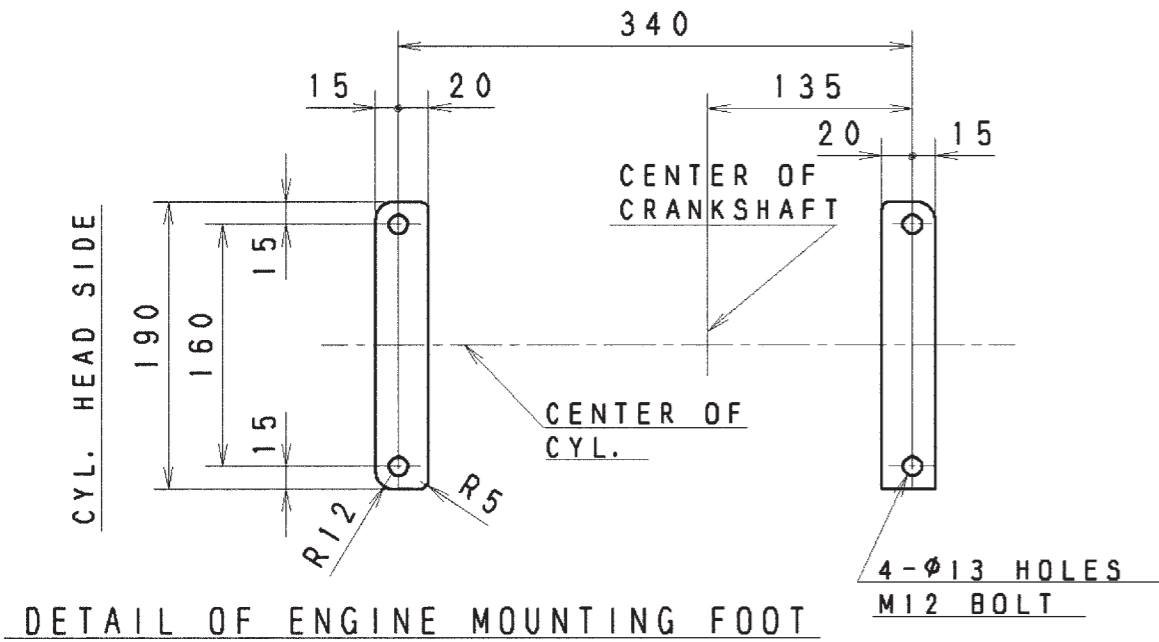
Shape & Dimensions Code

G.T.CODE M

Circularity and cylindricity are obtained from the radius measurement method

CAREER

('97.10.28) Newly compiled as M/C specifications.



WEIGHT (RAW)	(± %)	HYDRAULIC TEST	MPa	MANAGER	No.1 Chief of Technology
WEIGHT (Precision %)	(± %)	PNEUMATIC TEST	MPa	Engine Development Dept.	
SEC. MANAGER		MODEL	TF 80 90 -M -M	SCALE	1/5 (1/2.5)
CHECKED	SPECIALIST	QTY.	/ /	MATERIAL	
DESIGNED	DRAWN	DATE	1997 10.20	NAME	TF80, 90-M Outline of Assembly
YANMAR DIESEL ENGINE CO., LTD.			CODE	B2-05300-0055	A2 (C)
ENGINE DEVELOPMENT DEPT.					

Important Check Points	Symbol
Precision Type & Symbol	Symbol
Type	Symbol
Straightness	Symbol
Circularity	Symbol
Line Profile	Symbol
Flatness	Symbol
Cylindricity	Symbol
Surface Profile	Symbol
Parallelism	Symbol
Perpendicularity	Symbol
Angularity	Symbol
Position	Symbol
Concentricity	Symbol
Symmetry	Symbol
Circular Runout	Symbol
Total Runout	Symbol