

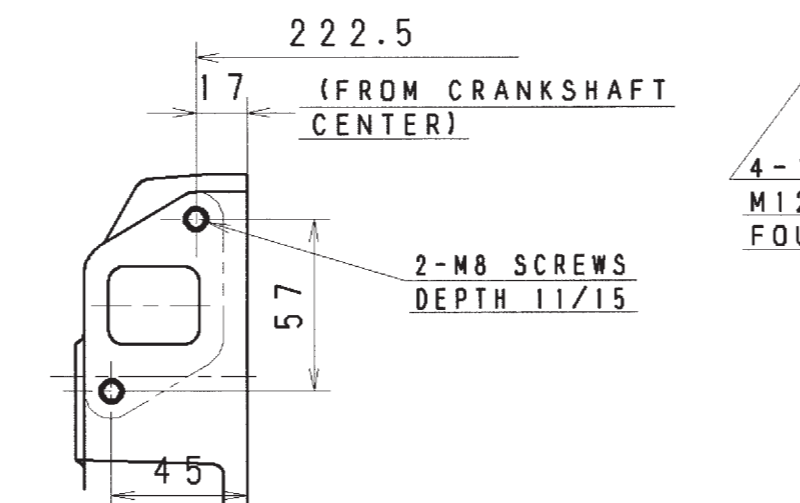
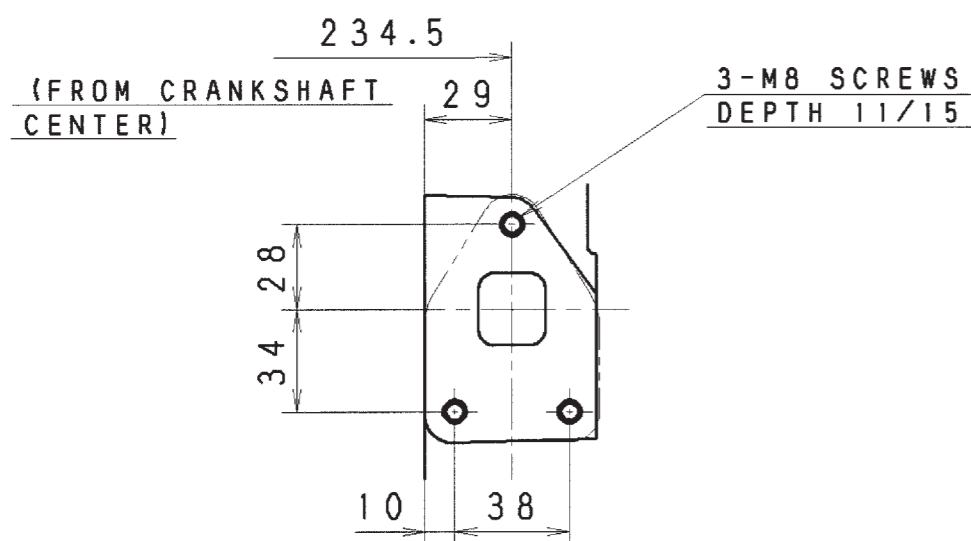
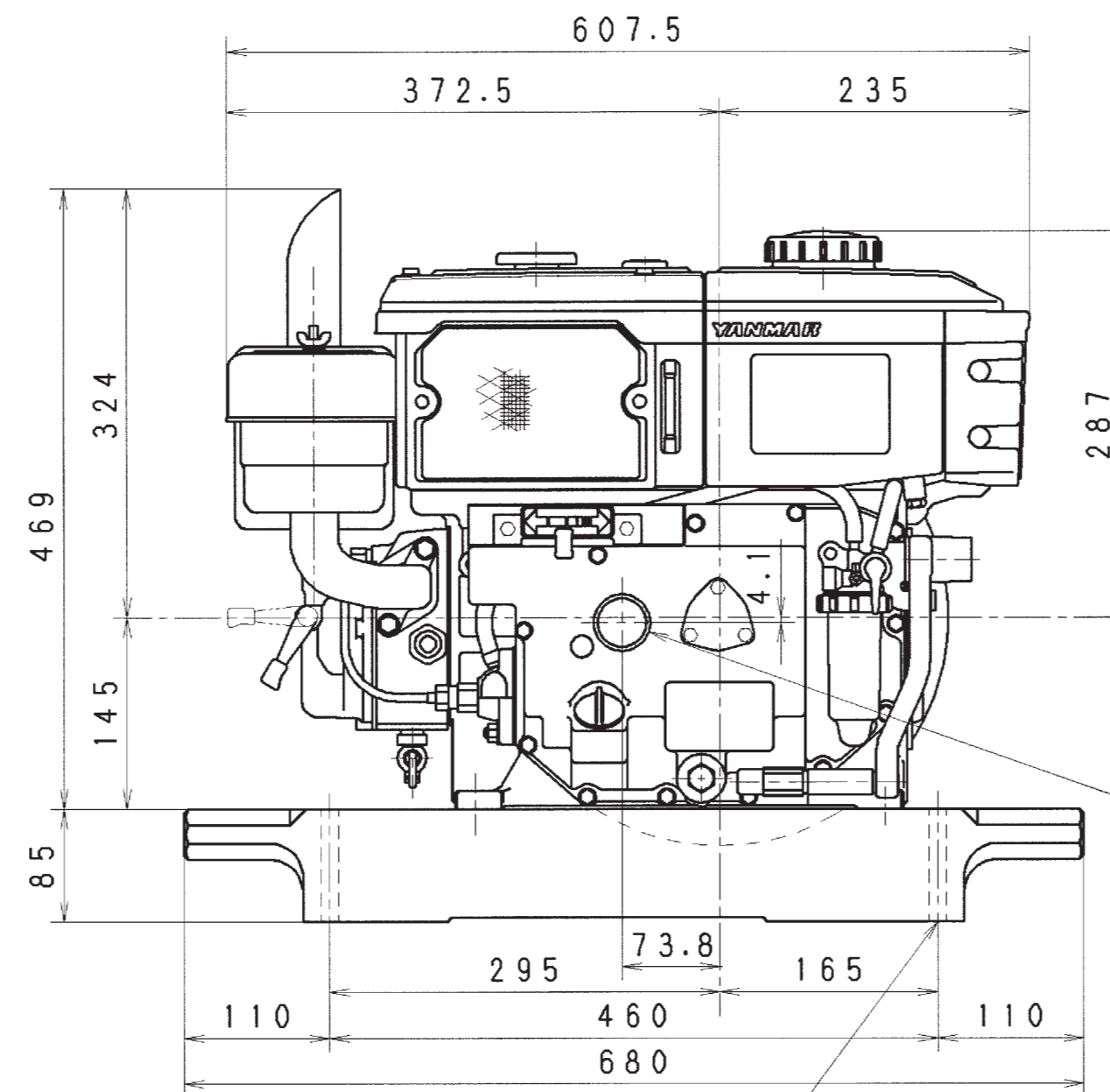
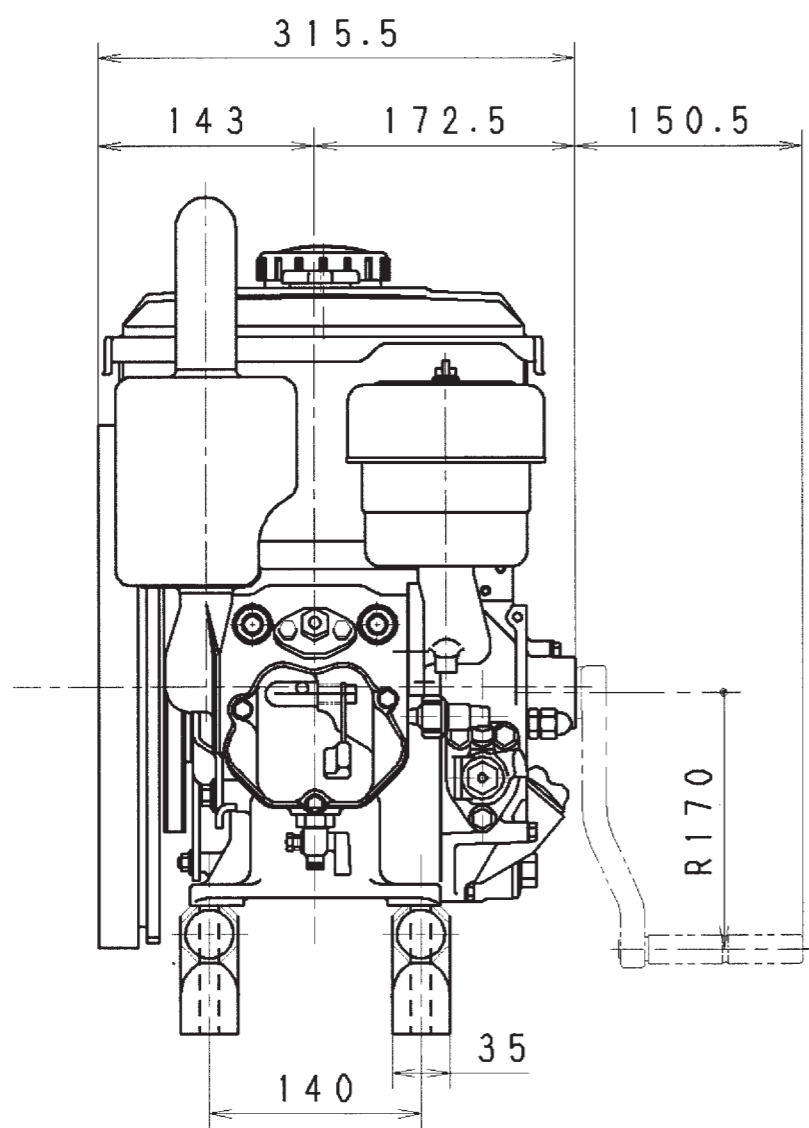
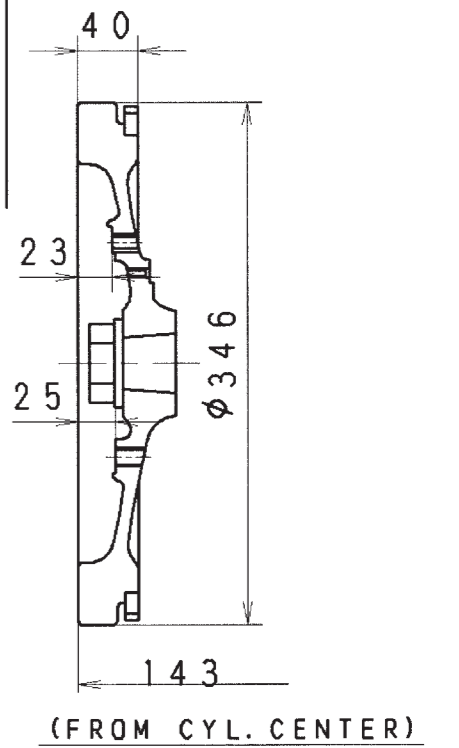
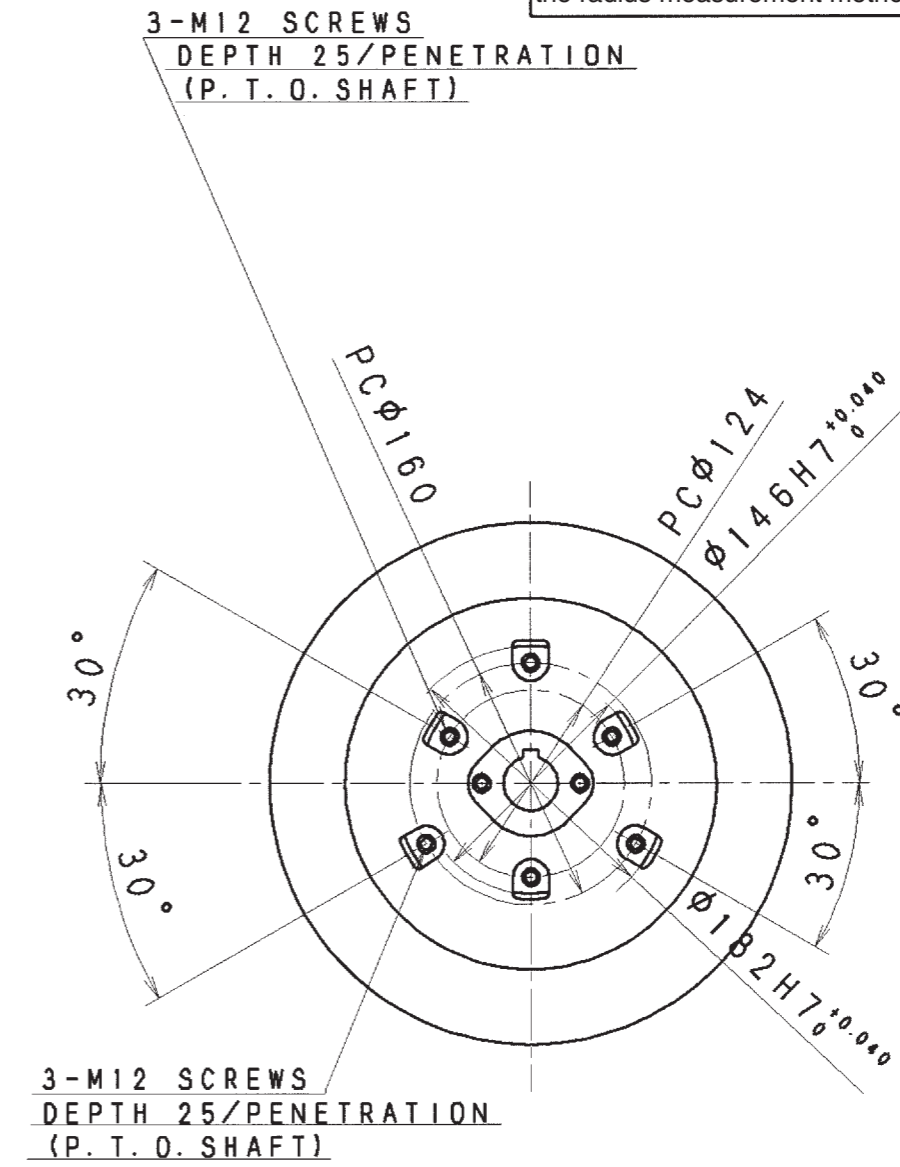
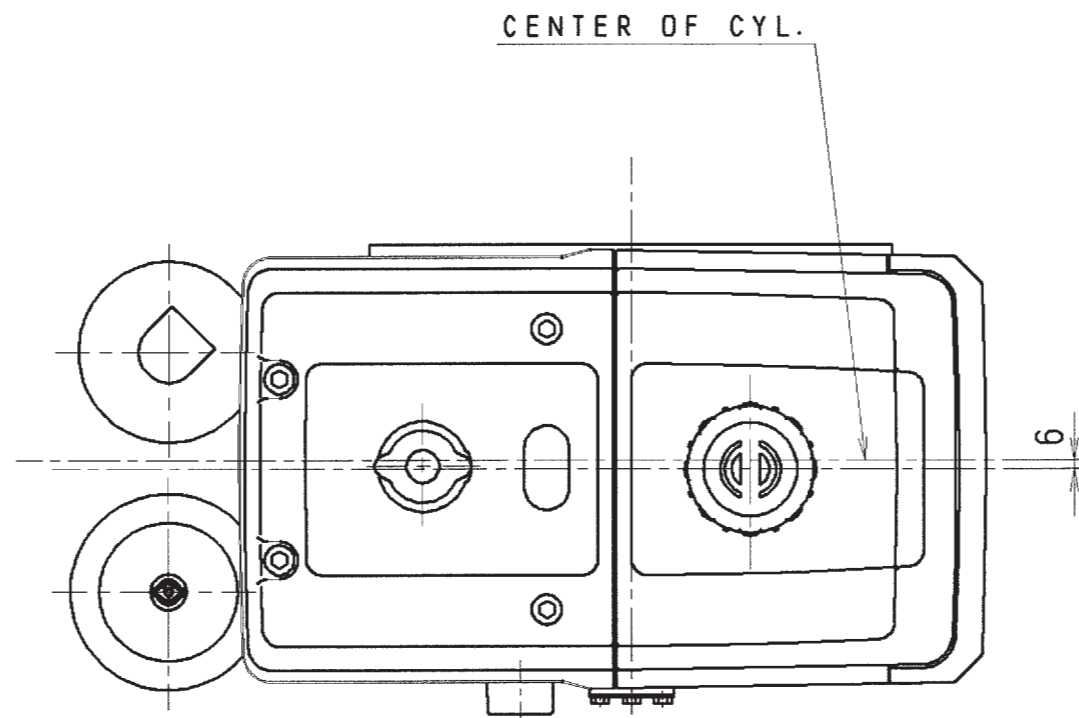
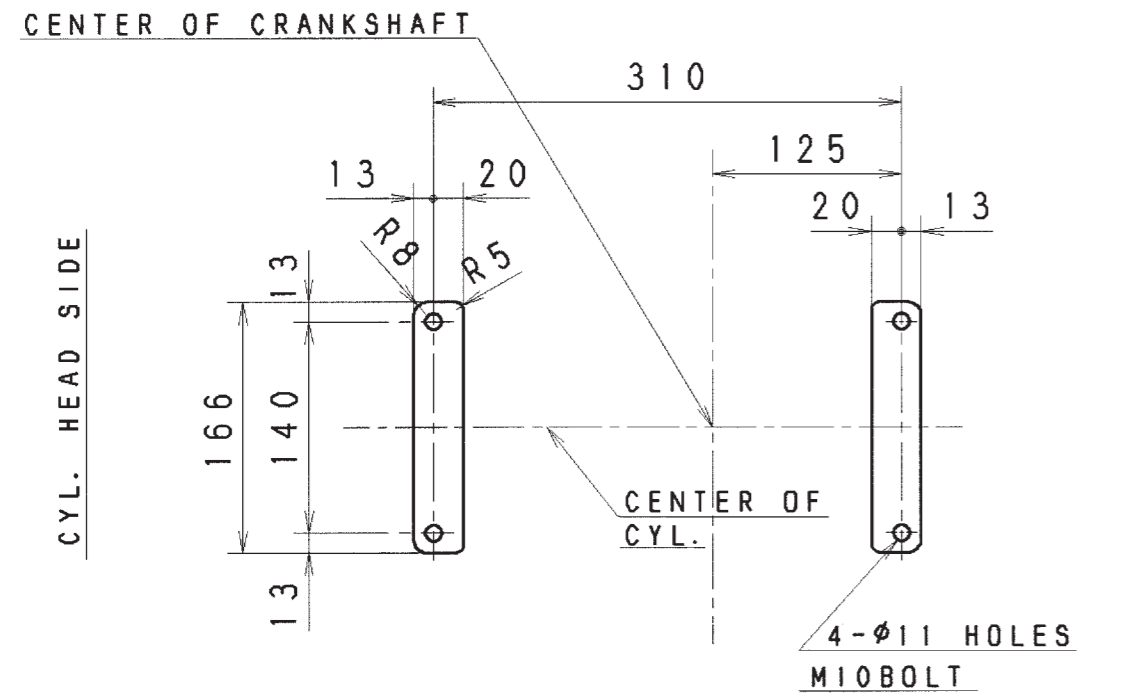
Yes <input type="radio"/>	Procurement Specifications	Inspection Standards	Quality Control Drawing	Specially Controlled Parts	Stably Controlled Parts during Initial Batch Production Period
---------------------------	----------------------------	----------------------	-------------------------	----------------------------	--

General Tolerance Length (Cutting)	Above 1	Below 4	±0.1	Above 250	Below 1000	±0.8	General Tolerance Length (Casting)	Below 10	±1'	
	Above 4	Below 16	±0.2	Above 1000	Below 2000	±1.2		Above 10	Below 50	±30'
	Above 16	Below 63	±0.3	Above 2000	Below 4000	±2.0		Above 50	Below 120	±20'
	Above 63	Below 250	±0.5					Above 120		±10'

Shape & Dimensions Code _____ G.T.CODEM _____

Circularity and cylindricity are obtained from the radius measurement method

CAREER
 ('97.11.21) After modification of upper structure and starting device, (NF-97059) it will serve as Modification Type I (NF-97060)



WEIGHT (RAW)	(± %)	HYDRAULIC TEST	MPa	MANAGER	No.1 Chief of Technology
WEIGHT (Precision %)	(± %)	PNEUMATIC TEST	(kg/cm ²)	Engine Development Dept.	
SEC. MANAGER		MODEL	TF 60 TF 70	SCALE	1/5 (1/2.5)
CHECKED	SPECIALIST	QTY.	/ /	MATERIAL	
DESIGNED	DRAWN	DATE	NAME	TF60, 70 Outline Drawing	
		1997 11.21	TF 60, 70 Outline of Assembly		
YANMAR DIESEL ENGINE CO., LTD.			ENGINE DEVELOPMENT DEPT.		
			B2-05100-0091		
			A2 (C)		

Important Check Points	Symbol
Precision Type & Symbol	Symbol
Type	Symbol
Form Tolerances	Symbol
Surface Tolerances	Symbol
Orientation Tolerances	Symbol
Position Tolerances	Symbol
Geometric Tolerances	Symbol
Surface Profile	Symbol
Parallelism	Symbol
Perpendicularity	Symbol
Angularity	Symbol
Position	Symbol
Concentricity	Symbol
Symmetry	Symbol
Circular Runout	Symbol
Total Runout	Symbol